



# Basta Boatlifts™

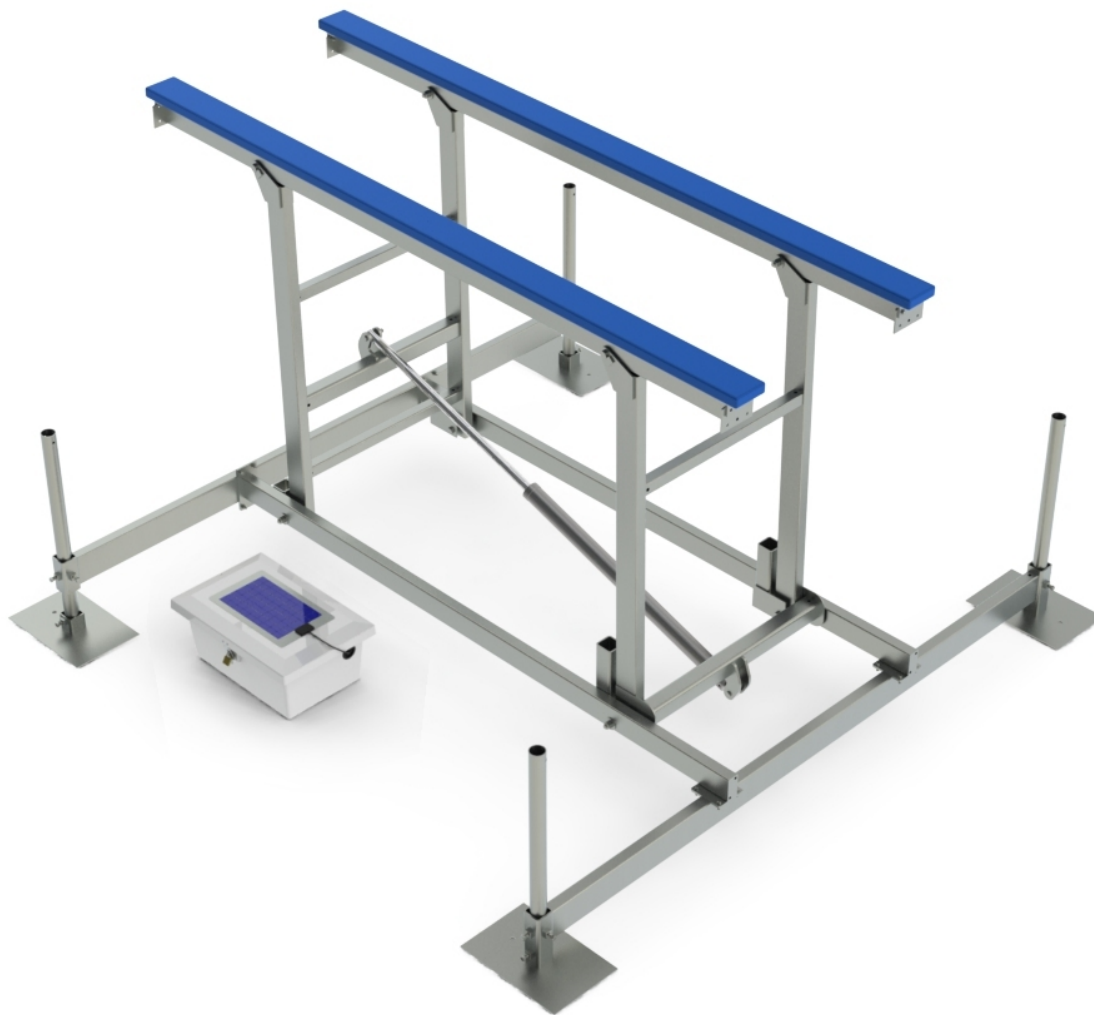
4050SP

## Over-Center™ Hydraulic Steel Lift

4,000 lbs Capacity    Model # BM4050SP

- ASSEMBLY
- INSTALLATION
- REPLACEMENT PARTS

**READ complete manual CAREFULLY  
BEFORE attempting assembly or operation**



**866-GO-BASTA**  
**[www.bastaboatlifts.com](http://www.bastaboatlifts.com)**

# INDEX

<b>Warning</b> .....	Page 2
<b>Assembly Instructions</b> .....	Pages 3 - 5
<b>First Use / Adjustments</b> .....	Page 6
<b>Parts Assembly Diagram</b> .....	Page 7
<b>Troubleshooting / FAQ</b> .....	Page 8
<b>Warranty</b> .....	Page 10
<b>Accessories</b> .....	Page 11



## WARNING

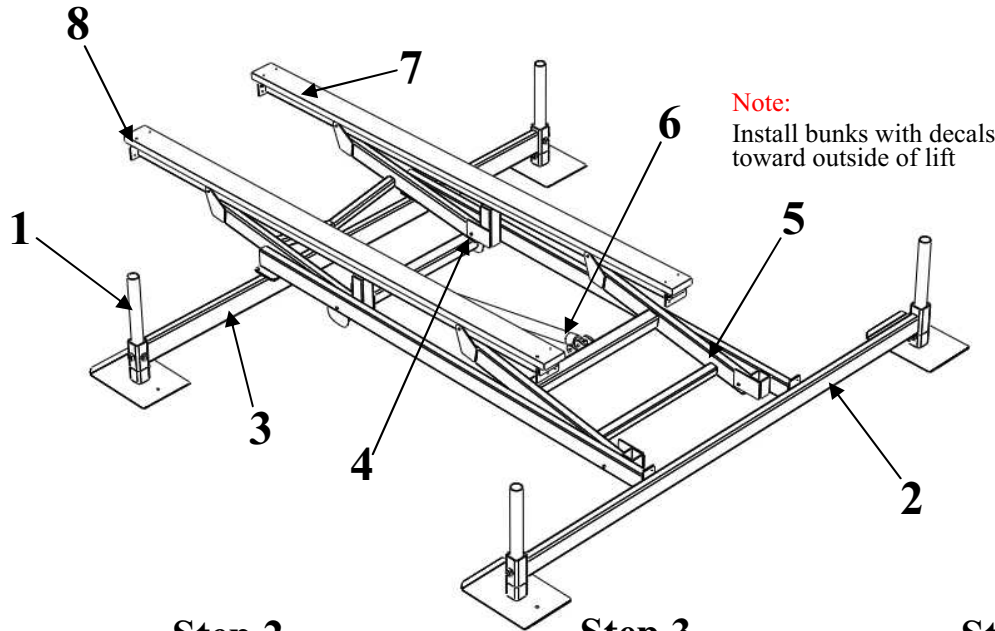
**NOTE:** Your boat lift is a very heavy piece of equipment. Improper use could result in serious injury or death. For the safety of people and property please review the safety guidelines below for your new boat lift.

- |   |  |
|---|--|
| <ul style="list-style-type: none"> <li>■ Visually inspect all parts and assemblies for defects and damage prior to assembling the lift.</li> <li>■ Use moly lube to prevent the stainless bolt &amp; nut sets from galling.</li> <li>■ Do not install the lift alone.</li> <li>■ Install the lift on firm and level ground.</li> <li>■ Verify the lower frame of the lift is level before each use.</li> <li>■ Turn the power off during periods of non- use.</li> <li>■ This hoist is a heavy piece of equipment please use with care.</li> <li>■ The lift should not be used for any other purpose besides the lifting of boats.</li> </ul> | <ul style="list-style-type: none"> <li>■ Do not exceed the maximum weight capacity specified for the lift.</li> <li>■ Passengers should stand clear of the lift and not be aboard when the lift is in operation.</li> <li>■ Do not play on or near the lift.</li> <li>■ Leave your automatic bilge pump turned on the automatic setting to prevent the accumulation of rain water.</li> <li>■ Service your lift regularly.</li> <li>■ Do not service the unit with the boat on the lift.</li> <li>■ Use a mooring line for additional security.</li> <li>■ Only use Basta Marine Factory oil in lift. Special biodegradable non-toxic hydraulic fluid part # <b>Y354-0001</b></li> </ul> |
|---|--|

Manufactured under one or more of the following patents:  
 #4895479, #4900187, #5143182, #5184914, #5311970,  
 #6318929, #6602022, #6837651, #7021861, #7210420,  
 #7712425, #D503692 Canada #2089044  
 Other patents pending

**Basta**<sup>TM</sup>  
 PATENTED DESIGN

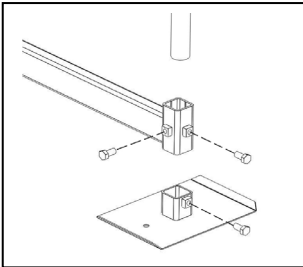
# ASSEMBLY INSTRUCTIONS



**Note:**  
Install bunks with decals  
toward outside of lift

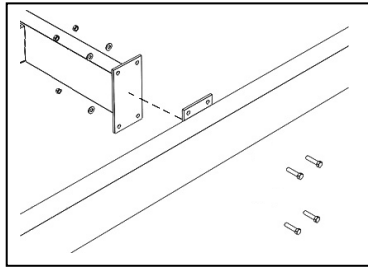
## Step 1

**Foot and Leg Sockets**  
12) 5/8 x 1.5 Hex Bolts



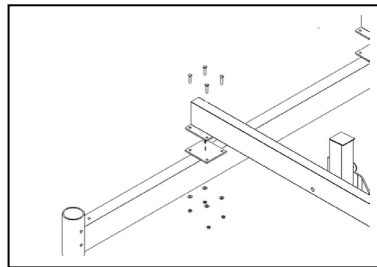
## Step 2

**Forward X-Member**  
8) 3/8 x 1.0 Bolts  
8) 3/8 Nylock Nuts  
8) 3/8 Washers



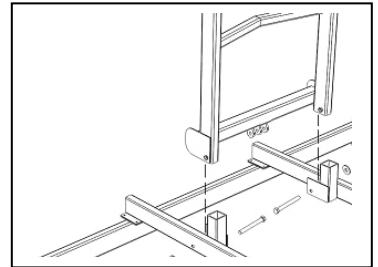
## Step 3

**Aft X-Member**  
8) 3/8 x 1.0 Bolts  
8) 3/8 Nylock Nuts  
8) 3/8 Washers



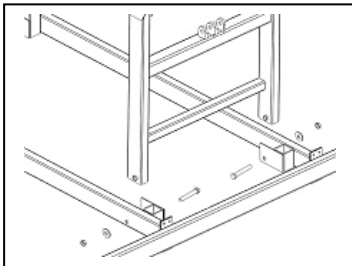
## Step 4

**Aft H-Frame**  
2) 3/4 x 6.5 Bolts  
2) 3/4 Washers  
2) 3/4 Nylock Nuts



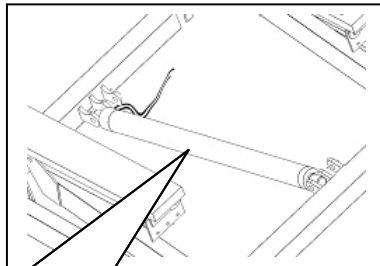
## Step 5

**Forward H-Frame**  
2) 3/4 x 6.5 Bolts  
2) 3/4 Washers  
2) 3/4 Nylock Nuts



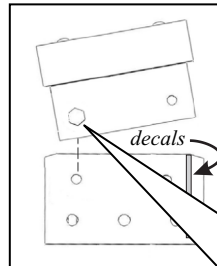
## Step 6

**Cylinder**  
2) 3/4 x 3.5 Clevis Pins  
2) Hair pins for Clevis pins



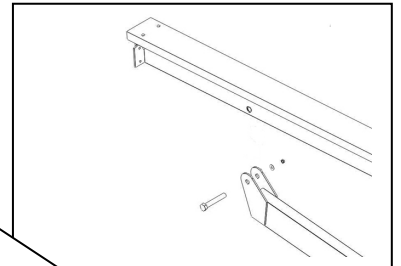
## Step 7

**Bunks**  
4) 3/8 x 1.25 Bolts  
4) 3/8 Washers  
4) 3/8 Nylock Nuts

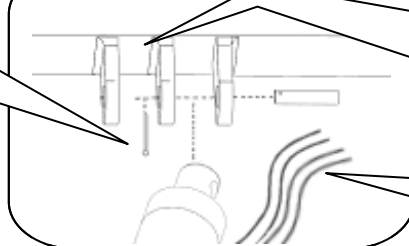


## Step 8

**Bunks**  
4) 3/4 x 4.0 Bolts  
4) 3/4 Washers  
4) 3/4 Nuts



**Rear H-frame**



**Note:**  
Use off-center position for cylinder if  
boat is equipped with skegs

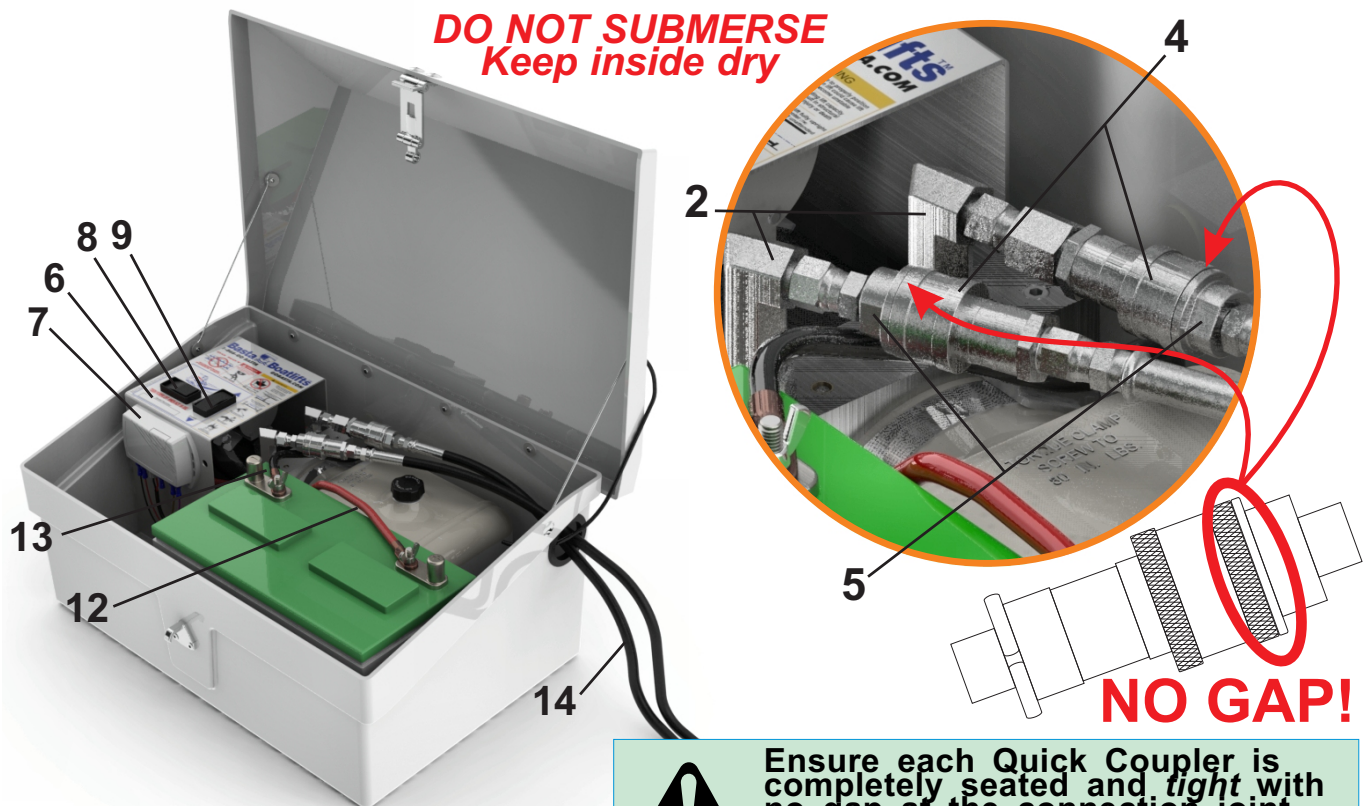
**Note:**  
Place hoses at rear of  
lift facing toward pump

**Note:**  
Point bolts toward center of lift,  
opposite decals - then tighten all  
bunk clip carriage bolts

**Having Trouble?**  
Call Basta Marine at  
1-866-GOBASTA or contact  
your local dealer for help  
with assembly and installation.

Assembly Instructions are continued on page 4

## ASSEMBLY INSTRUCTIONS *Cont.*

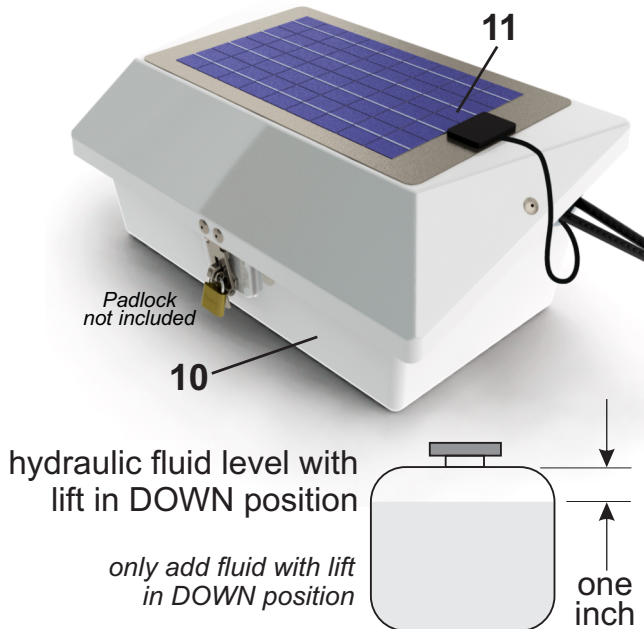


Prevent unauthorized use -  
**KEEP BOX LOCKED**



**Ensure each Quick Coupler is completely seated and *tight* with no gap at the connection joint.**

Connection must be ***tight*** to open internal check valve and allow fluid to flow. **USE PLIERS**



1. The Hydraulic Pump will arrive fully assembled. Make sure all the connections are snug to prevent leaks or loss of power to the unit.
2. Install a Group 27 Marine Grade Battery as shown above. Be sure to connect the Red Battery Cable (#12) to the positive terminal and the Black Battery Cable (#13) to the negative terminal.

**NOTE:** Ensure battery cables are correctly connected and their terminals are tight (use pliers).

3. Slide the Hydraulic Cylinder Hoses (#14) through the access hole in the side of the White Fiberglass Box (#10) and attach them to their corresponding Quick Couplers (#4, #5).
4. Pass the cable from the Solar Panel through the same access hole as the hoses and plug it into the Remote Control Unit (#7A) as indicated in the diagram at right.
5. Test the lift on dry ground using the Up/Down Switch (#9) and the Key Fob Transmitters. Inspect the system for leaks.

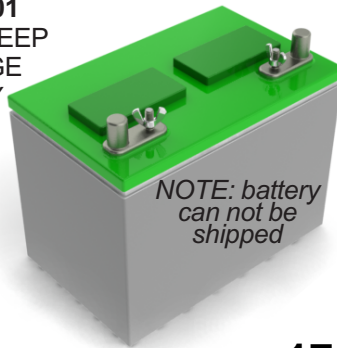


**NOTE:** always turn unit OFF when not in use



# ASSEMBLY INSTRUCTIONS *Cont.*

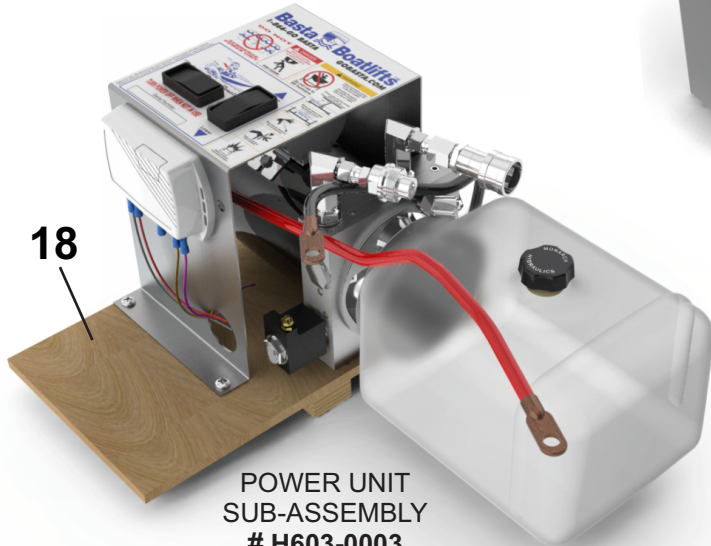
# R285-1001  
GROUP 27 DEEP  
DISCHARGE  
BATTERY



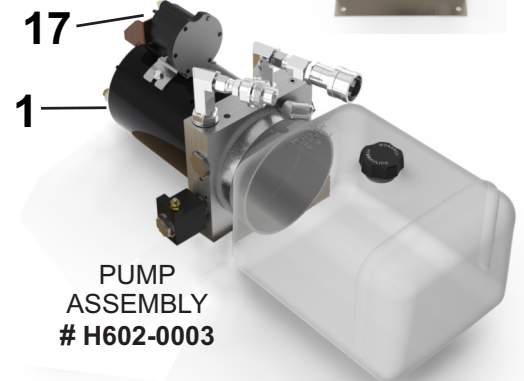
CONTROL PANEL  
ASSEMBLY  
# R815-0002



pre-wired  
with wiring  
harness

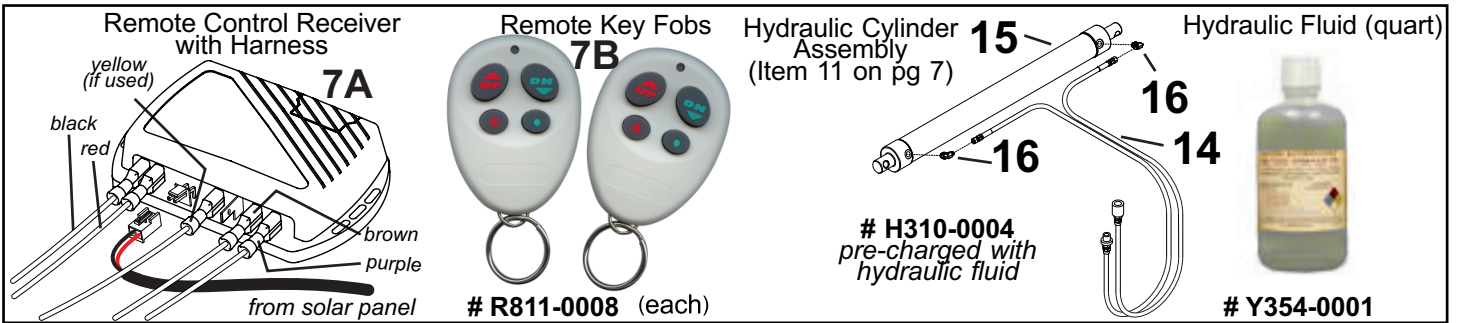


POWER UNIT  
SUB-ASSEMBLY  
# H603-0003



PUMP  
ASSEMBLY  
# H602-0003

Please order replacement parts by PART NO. and DESCRIPTION



## COMPLETE HYDRAULIC POWER UNIT WITH ENCLOSURE & SOLAR # H653-0001

### POWER UNIT SUB-ASSEMBLY # H603-0003

#### PUMP ASSEMBLY # H602-0003

ITEM	PART NUMBER	DESCRIPTION
1	call	pump motor only
2	H701-0004	90 deg hyd. fitting
3	n/a	
4	H770-0001	quick coupler assy, female
5	H770-0002	quick coupler assy, male
17	R321-0001	high current solenoid
12	R711-1010	positive battery cable (red)
13	R711-1005	negative battery cable (black)

#### CONTROL PANEL ASSEMBLY # R815-0002

ITEM	PART NUMBER	DESCRIPTION
6	R815-0001	panel with graphics
7A	R812-0009	remote control rcv (w/ 2 fobs)
7B	R811-0008	remote control fob
8	R310-0001	rocker switch, on-off
9	R310-0002	rocker switch, raise-lower
18	W421-0001	pump board

### ENCLOSURE ASSEMBLY # C245-0002

ITEM	PART NUMBER	DESCRIPTION
10	C242-0001	white fiberglass enclosure
11	R281-0001	solar panel assembly

## HYDRAULIC CYLINDER ASSEMBLY # H310-0004

ITEM	PART NUMBER	DESCRIPTION	ITEM	PART NUMBER	DESCRIPTION
15	H412-5301	hydraulic cylinder	14	H123-0001	hydraulic hose assembly
16	H711-0002	90 degree hydraulic fitting			

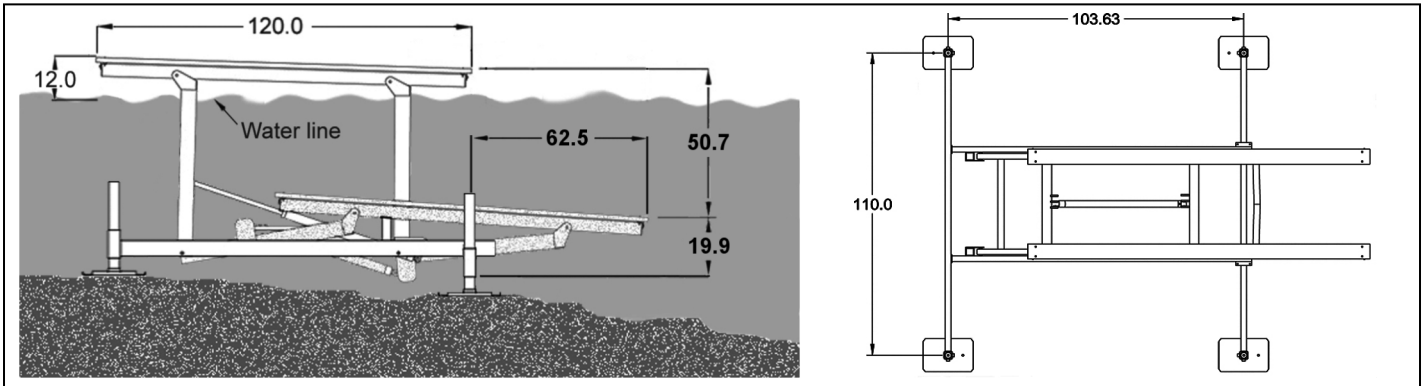
# FIRST USE AND ADJUSTMENTS

---

First test lift on dry ground for oil leaks, remote control function and correct operation.

**Note:** Lift *must* move into Over-Center position when fully raised.

**Use these diagrams to help place the lift**



**NOTE:** Follow this “first use section” during your first loading of a boat onto the boat lift. These are required adjustments to make the lift work correctly.

1. Place the boat over the lift to the following specifications:
  - a. If your boat is an outboard, inboard/outboard, or V-drive, the transom should be 2 inches off of the end of the bunk boards.
  - b. If your boat is a mid-engine or shaft-drive, the transom should be 12 to 24 inches off of the end of the bunk boards.
2. Disembark and raise the boat slowly. If more than two inches of settling occurs, stop, carefully lower the lift to remove the boat and re-level the boat lift. Continue repeating this step until the boat can be raised into the full Over-Center™ position without settling.
3. Remove the boat. Verify that the lift frame is level. Re-level the framework if necessary.

**NOTE:** If you purchase a new boat, be sure it is within the weight capacity limits of the lift. Also remember that these adjustments will have to be done again to accommodate the new boat.

**Your Basta Boatlift™ requires very little maintenance once installed.**

Occasionally wipe the solar panel with a clean, damp cloth to preserve its charging performance.

Every 6 months, we recommend:

Inspect the hoses, cylinders and fittings for leaks and wear.

Check the wire terminals for snugness and corrosion.

Check the hydraulic fluid and battery electrolyte levels:

The battery electrolyte should be slightly above the indicator ring in each cell. Carefully add DISTILLED water if necessary. Do not over-fill.

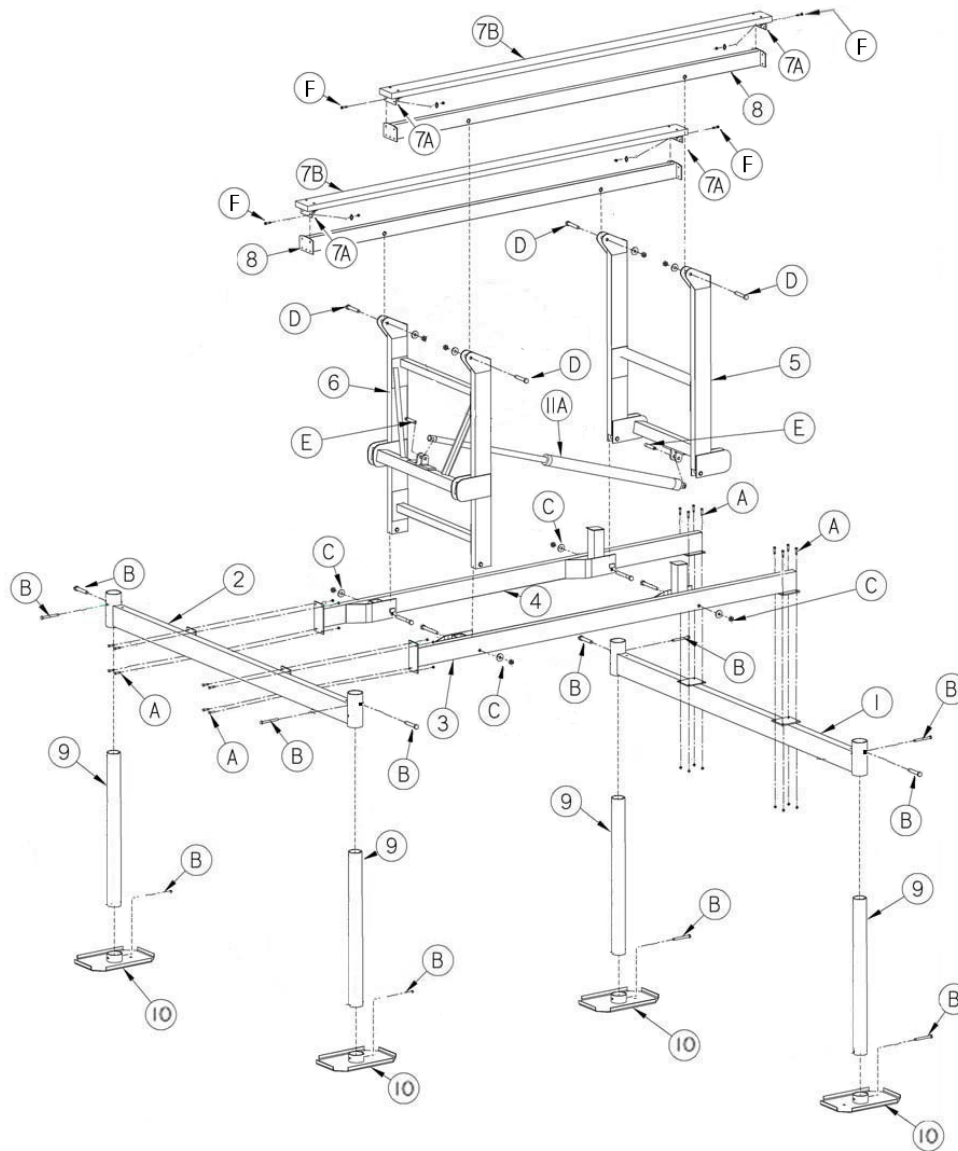
The hydraulic fluid level should be about one inch below the top of the reservoir with the lift DOWN.  
**DO NOT add fluid with the lift in the raised position!**

**Use only Basta approved fluid.**

**We recommend Chevron Clarity® AW ISO 32 or CITGO Aquamarine® 46 hydraulic oils.**

**NOTE:** The hydraulic fluid should be completely changed every two years to ensure successful continued use.

# ASSEMBLY DIAGRAM



## Assembly Item List Note: Items A-E are referred to as sets i.e.; A = bolt, washer and the nut.

Part #.	Item #	Description	Qty	Part #	Item #	Description	Qty
W110-0002	1	Aft Cross Bar	1	S103-0505	A	Hex Cap Screw SS 3/8-16 x 1.0 L	16
W110-0001	2	Forward Cross Bar	1	S313-0008	A	Washer - Flat SS 3/8	16
W104-0001	3	Side Rail (Left)	1	S362-0008	A	Nut - Nylock SS 3/8-16	16
W104-0002	4	Side Rail (Right)	1	S103-0807	B	Hex Cap Screw SS 5/8 -11 x 1.5 L	12
W101-0012	5	Aft H-Frame	1	S103-0915	C	Hex Cap Screw SS 3/4-10 x 6.5 L	4
W101-0011	6	Forward H-frame	1	S362-0012	C	Nut - Nylock SS 3/4 -10	4
A427-0001	7	Bunk Board Assembly (includes 7a & 7b)	2	S313-0013	C	Washer - Flat SS 3/4	4
K204-0004	7a	Bunk Board Angle Bracket	4	S103-0910	D	Hex Cap Screw SS 3/4-10 x 4.0 L	4
W115-0001	7b	Carpeted Bunk Board	2	S362-0012	D	Nut - Nylock SS 3/4 -10	4
W113-0001	8	Bunk Rail	2	S313-0013	D	Washer - Flat SS 3/4	4
K200-0012	9	Adjustable Leg	4	S501-0812	E	Clevis Pin, SS 3/4 DIA x 3.5 L	2
W116-0001	10	Foot Pad	4	S522-0802	E	Hair Pin for Clevis Pin	2
H310-0003	11	Hyd Cyl Assy (includes 11a,b & 2 fittings)	1	S103-0506	F	Hex Cap Screw SS 3/8-16 x 1.25 L	4
H412-5202	11a	Hydraulic Cylinder	1	S313-0008	F	Washer - Flat SS 3/8	4
H123-0001	11b	Hydraulic Hose Assembly (not shown)	1	S362-0008	F	Nut - Nylock SS 3/8 -16	4
				Y356-0002		Moly Assembly Lube	2

## **TROUBLESHOOTING PROBLEMS AND FAQ**

### **Q: THE BATTERY WILL NOT HOLD A CHARGE**

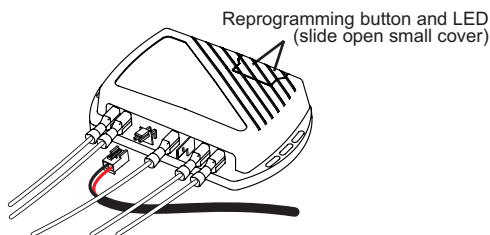
- A: Verify that the loaded boat is not exceeding the weight capacity of the lift.
- A: Ensure the solar panel is properly connected.
- A: Re-align the solar panel for proper exposure to the sun.
- A: Recharge the battery with a 10 amp charger and check the charge again.
- A: Have the battery tested. It may be old and require replacement.
- A: If the lift is being used frequently during the day, it may be necessary to use a 110-volt maintainer/charger.

### **Q: THE REMOTE CONTROL IS NOT FUNCTIONING PROPERLY**

- A: Verify that the LED on each remote control key fob comes on when each button is pushed. If the LED is not bright, the remote's range is reduced - replace the fob's battery.
- A: Verify that the large power unit battery is charged and connections are tight.
- A: Make sure the antenna wire on the power unit's remote receiver is located properly.
- A: Reprogram the remote key fobs.

### **Q: THE HAND HELD REMOTE KEY FOBS NEED TO BE REPROGRAMMED**

1. Turn on the power switch located on the top of the control panel.
2. Locate the small red button under the cover of the white remote control receiver located inside the pump box. This is the reprogramming button.



3. Push the reprogramming button until the red LED next to the button turns on. Release the button.
4. Press the UP button on one key fob until the LED goes out. Release the button.
5. Press the fob's UP button again. The LED should flash slowly. Release the button. Repeat until the lift runs up.
6. Repeat steps 3-5 for your other fob.
7. Test all key fobs by individually pressing first the UP button, pausing, and then the DOWN button. Verify the lift direction visually.

### **Q: THE PUMP DOESN'T RUN**

- A: Check the battery charge, recharge if necessary.
- A: Check the battery connections, clean and re-secure if necessary.

### **Q: THE PUMP RUNS, BUT THE LIFT DOESN'T MOVE**

- A: Check the 'quick couplers' in the Power Unit. If they are not screwed together tight enough, built-in check valves will not allow fluid to flow. See Page 4.

- A: Check the fluid level. See Page 4.

### **Q: DOES THE LIFT HAVE TO GO ALL THE WAY UP?**

- A: YES - in order for your lift to function as intended the lift must ALWAYS be stored in the full upright position when the boat is unattended.

### **Q: IS MY BOAT SECURE?**

- A: Yes, once you verify that the lift is Over-Center™, switch off the power and lock the power unit box, there is less chance of theft.

### **Q: DO I NEED A MOORING LINE?**

- A: Under most circumstances one mooring line is sufficient to prevent the boat from drifting away if the lift inadvertently lowers or the water level rises.

### **Q: HOW MUCH SUN DOES THE SOLAR PANEL NEED?**

- A: The panel should receive constant sun for at least 8 hours a day.

### **Q: HOW DO I CHANGE THE HYDRAULIC FLUID?**

- A: Our fluid should not require replacement for a considerable amount of time. If yours has been contaminated or the hydraulic power unit has been replaced, visit our web site at [www.bastaboatlifts.com](http://www.bastaboatlifts.com) for detailed instructions.

### **Q: IS THE HYDRAULIC FLUID SAFE FOR THE FISH?**

- A: We use a special low-toxicity hydraulic fluid that is safe for the environment. This oil is different than food-grade oil. Only use Basta Marine approved fluid in your hydraulic system.


### **Q: WHAT IF I GET A NEW BOAT?**

- A: Re-leveling the boat lift may be necessary. A new lift will be required if the boat exceeds the weight capacity of your current lift.

**FOR ASSISTANCE OR SERVICE:**  
**Contact your local dealer or call**  
**1 - 866 - GO - BASTA**


**[www.bastaboatlifts.com](http://www.bastaboatlifts.com)**  
**[mail@bastaboatlifts.com](mailto:mail@bastaboatlifts.com)**





**Before Using:**

Read this manual completely!

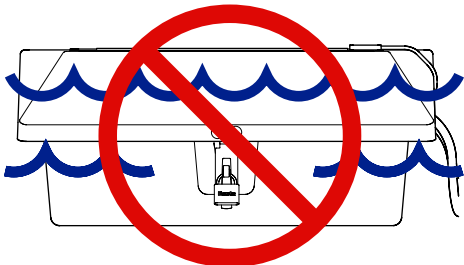


**INSPECT**

the lift monthly

for frayed hoses, loose fasteners and corrosion

**DO NOT**



**SUBMERGE POWER UNIT**

**⚠ DANGER**


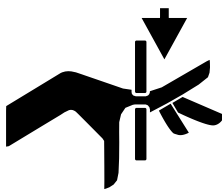
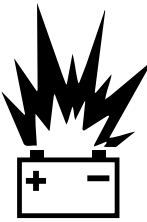

Avoid all moving parts to prevent death or serious injury



**STAY CLEAR!**

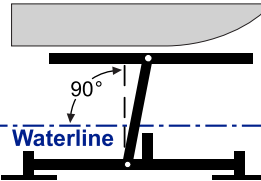
Exceeding lift capacity may result in structural failure, injury or death

**⚠ WARNING**

 <p><b>Do not use to lift humans</b></p>	 <p>Power unit lid may close suddenly</p>	 <p>Battery produces flammable hydrogen</p>
<p>High pressure hydraulics can penetrate skin</p>		
	<p>OIL INJECTED INTO THE SKIN FROM HIGH PRESSURE LEAKS IN HYDRAULIC SYSTEMS CAN CAUSE SEVERE INJURY. MOST DAMAGE OCCURS DURING THE FIRST FEW HOURS. SEEK MEDICAL ATTENTION IMMEDIATELY. SURGICAL REMOVAL OF OIL MAY BE NECESSARY.</p>	

Failure to properly position boat on lift could cause lift to become unstable


Always raise lift fully upright Over-Center (™) if boat is on lift unattended



90°

Waterline

Before use always check that lift frame is level



Waterline

## USE ONLY BASTA APPROVED BIODEGRADABLE HYDRAULIC FLUID

We recommend Chevron Clarity® AW ISO 32 or CITGO Aquamarine® 46 hydraulic oils.

***After the lift is assembled and installed, all fasteners should be checked for proper tightness and reinspected periodically.***

## BASTA MARINE MOORING PRODUCTS LIMITED WARRANTY

**WARRANTY:** Basta Inc. dba Basta Boatlifts and Basta Marine ("Company") warrants its Products for non-commercial use for a period of three (3) years, to the original Purchaser ("Purchaser") against manufacturing defects in all Product materials and workmanship beginning from date of purchase of the Product from Company. If the Product is purchased from an authorized Company Reseller, the warranty term begins upon the date the Product is sold to the end Purchaser or three (3) months from the date the Product is shipped from Company, whichever occurs first. Under the following terms and conditions:

**NOTICE REQUIREMENTS AND REMEDIES:** If the Purchaser discovers a defect, the Company, or its authorized Company dealer or agent, will, at the Company's options: (1) repair the Product, (2) replace the defective part, or (3) refund the purchase price of the Product upon confirmation by Company the Product is defective, provided that the Company receives notice of the defect from the Purchaser or Company authorized agent before the warranty period lapses. Product changes caused by age or environment (such as marine growth, heat corrosion or electrolysis) shall not constitute a defect. Confirmation of the defect shall require that reasonable proof of the defect be provided by Purchaser to Company or Company authorized agent, and may include that the Product or part be returned to Company for inspection at Purchaser's initial expense. This warranty shall not apply if Company receives notification after the before-stated deadline, regardless of when the defect occurred or was discovered, and regardless of the reason for the delay in notification. "Notification" shall be deemed to have occurred when the Purchaser or Company authorized agent sends written notice to Company by fax or by e-mail and when receipt is confirmed by Company's response.

**EXCLUSIONS:** This warranty does not apply to damages caused by or due to: (1) accident (including, without limitation, collision, fire, flood, wind, ice or any other natural disaster or acts of God), abuse, misuse, overloading, out of level or improper boat loading (i.e.: not fully on, too far on, or crooked on lift), or (2) faulty assembly or installation in the event such assembly or installation was not performed by a Company employee or Company authorized agent. Company is not responsible for determining the weight or dimensions of Purchaser's boat, and Purchaser is advised that published boat specifications are often inaccurate. This warranty is void if the Product has been modified without the permission of the Company or if any Company serial number has been removed or defaced. Normal maintenance requires an annual inspection of the Product by a Company employee or Company authorized agent, including bolts, pins, hydraulics, pump, electronics, and welds and failure to undertake such maintenance may constitute "abuse". Lift components' fluid level and condition, including battery water and acid, hydraulic fluid and strainer cleaning are maintenance items and are not covered by this warranty. Zincs, ropes, batteries, cosmetic concerns and custom coatings are not covered by this warranty. Batteries supplied by Company that are maintained in top operating condition by Purchaser are warranted for a period of one (1) year. If any Company Product is used in brackish or salt water, the Purchaser agrees that proper maintenance requires that the Purchaser shall attach to the Product, maintain and regularly check sacrificial anodes, also known as "zincs," in order to prevent electrolysis from damaging the lift metals, and that failure to attach and maintain the zincs constitutes "abuse." This warranty does not void or alter any rights the Purchaser may have against authorized agents or suppliers of component parts.

**LIMITATIONS:** To the maximum extent permitted by law except as expressly stated herein, there are no warranties, expressed or implied, by operation of law or otherwise, of the Product furnished under this Agreement. Seller disclaims any implied warranty of merchantability or fitness for a particular purpose. The sole remedy for liability of any kind shall be limited to the remedies provided in this warranty and shall in no event include any incidental, indirect, special or consequential damages or loss of use, revenue or profit. Should the company nevertheless be found liable for any damages the total liability of the company shall be limited to the purchase price of the product.

### Product Information

Serial #: \_\_\_\_\_

Date of purchase: \_\_\_\_\_

Purchased from: \_\_\_\_\_

Contact name: \_\_\_\_\_

Phone number: \_\_\_\_\_

Notes: \_\_\_\_\_

\_\_\_\_\_

\_\_\_\_\_

## ACCESSORIES FOR MOST BASTA BOATLIFTS™

For additional information and images visit our web site at [www.bastaboatliffts.com](http://www.bastaboatliffts.com) or contact Basta Marine at 1-866-GOBASTA for a catalog.



### Centering Devices

These vertical reference guides gently center your boat over the lift and provide a constant reference point for front/back positioning.



### Power Unit Support Bracket

Safely secure the power unit box to a boatlift canopy leg or the side of your dock.



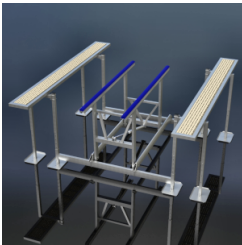
### Lower Unit Stop

For boats with outboards or outdrives, these assist in proper placement of your boat by gently stopping your forward motion.



### Light kit

Install these lights above or below the water. They turn on with your remote control key fob.



### Side Deck Brackets

One of the many advantages of using a boat lift is the increased accessibility to your boat for maintenance. These brackets allow a side deck to be attached to the existing boat lift or canopy legs.



### Load Guides

Designed to make loading your boat straight and true easy - even in cross winds and active water.

## CANOPIES

Protect your boat from the harmful effects of the sun, wind and snow.

Solø™ 33 canopy



### Basta Solø™ canopy features:

- Low profile silhouette
- Sturdy and wind resistant
- Attaches to a variety of lifts
- Wide choice of colors
- Durable Weblon® vinyl top
- Optional Sunbrella® tops
- 22, 24, 26, 33, 39 foot lengths
- 9 and 12 foot widths
- Also models for 2XV and 3XV lifts
- All aluminum design
- Custom extrusions - no welds



**Basta**  
**Boatlifts<sup>TM</sup>**