

**BASTA BOATLIFTS**  
**OVER-CENTER GALVANIZED STEEL LIFT**

**10,000 lb Capacity Boat Lift**  
**Models 10k53 / 10k65**



**866-GoBasta GoBasta.com**

**COPYRIGHT 2024**  
**BASTA BOATLIFTS**



**11/24**  
**L392-0127**

## **DANGER**

- Do not exceed the maximum weight capacity specified for the lift. Maximum weight capacity can be found on the cover of this manual and on the H frame of the lift. Improper use or failure to follow this instruction can cause property damage, serious injury, or death.
- Never use for lifting humans or animals. Improper use or failure to follow this instruction can cause property damage, serious injury, or death.
- The lift should only be used for lifting boats & watercraft.
- Always avoid being under, and maintain adequate clearance from, the lift. Failure to follow this instruction can cause serious injury or death.
- Always use AGM batteries and follow battery manufacturer's warnings and instructions. Improper use, or use of other batteries, have the potential to produce flammable hydrogen gas which can result in serious injury or death.

## **WARNING**

- Visually inspect all parts and assemblies for damage or defects prior to assembling lift.
- Verify the lower frame of the lift is level before each use.
- Do not play on or near the lift.
- Do not service the boat lift with the watercraft on the lift.
- High pressure hydraulics can penetrate skin. Oil injected into the skin from high pressure systems can cause severe injury. In the case of injury, seek medical attention immediately.

## **CAUTION**

- Do not install the lift alone.
- Passengers should stand clear of the lift when the lift is in operation.

<b>SAFETY .....</b>	<b>P 2</b>
<b>PRODUCT INFORMATION &amp; WARRANTY.....</b>	<b>P 3</b>
<b>PARTS LIST AND DIAGRAMS .....</b>	<b>P 4-5</b>
<b>ASSEMBLY INSTRUCTIONS .....</b>	<b>P 6-15</b>
<b>OPERATIONAL INSTRUCTIONS .....</b>	<b>P 16</b>
<b>REMOTE CONTROL FOB INFORMATION .....</b>	<b>P 17</b>
<b>TROUBLESHOOTING / FAQ .....</b>	<b>P 18</b>
<b>MAINTENANCE .....</b>	<b>P 19</b>
<b>WARRANTY .....</b>	<b>P 20</b>

## PRODUCT INFORMATION

Serial #: \_\_\_\_\_

Purchased From: \_\_\_\_\_

Date of Purchase: \_\_\_\_\_

Contact Name: \_\_\_\_\_

Phone #: \_\_\_\_\_

Notes: \_\_\_\_\_

\_\_\_\_\_

\_\_\_\_\_

\_\_\_\_\_

\_\_\_\_\_

\_\_\_\_\_

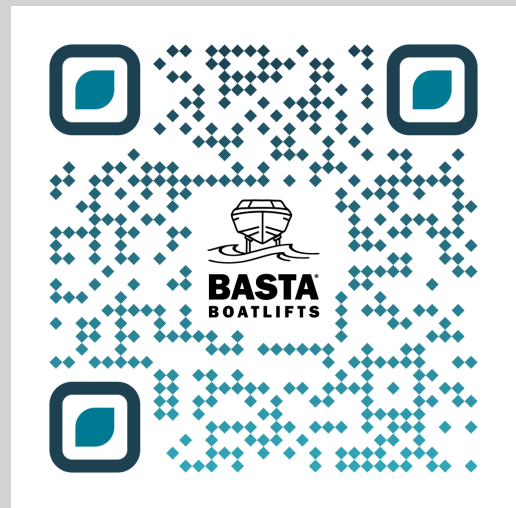
\_\_\_\_\_

\_\_\_\_\_

## IMPORTANT!

**WARRANTY MUST BE  
REGISTERED WITHIN 30 DAYS  
OF INSTALLATION.**

TO REGISTER, SCAN BELOW OR VISIT  
[WWW.BASTABOATLIFTS.COM/SUPPORT](http://WWW.BASTABOATLIFTS.COM/SUPPORT)  
TO COMPLETE WARRANTY FORM



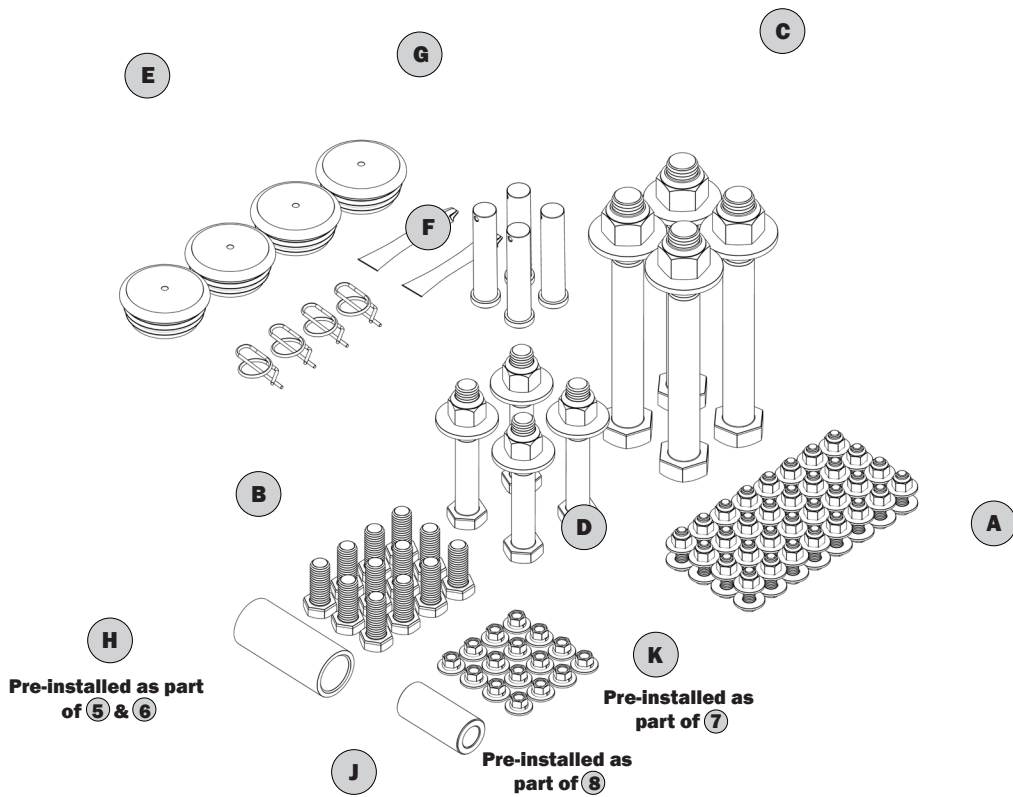
FOR WARRANTY REGISTRATION, VISIT OUR WEBSITE AT [WWW.BASTABOATLIFTS.COM/SUPPORT](http://WWW.BASTABOATLIFTS.COM/SUPPORT)  
TO COMPLETE WARRANTY FORM

# PARTS LIST - BOAT LIFT



ITEM	PART NO.	DESCRIPTION	QTY.
1	W110-0023	Aft Crossmember	1
2	W110-0022	Forward Crossmember	1
3	W104-0049	Left Side Rail	1
4	W104-0048	Right Side Rail	1
5	A431-0077	Aft H-Frame (10k65)	1
5	A431-0076	Aft H-Frame (10k53)	1
6	A431-0078	Forward H-Frame (10k65)	1
6	A431-0075	Forward H-Frame (10k53)	1
7	A428-0041	Bunk Board Assembly	4

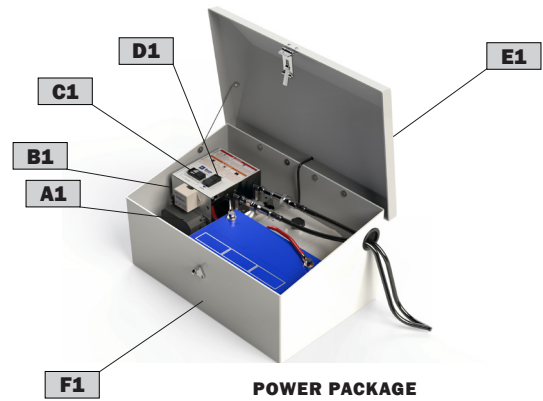
ITEM	PART NO.	DESCRIPTION	QTY.
8	A427-0026	Bunk Rail	2
9	A200-0073	Adjustable Support Leg	4
10	W116-0006	Foot Pad	4
11	H310-0019	Hydraulic Cylinder Kit	1
13	W410-0093	Bunk Sub-Assembly (part of #7)	8
14	K204-0180	Dual Bunk Bracket (part of #7)	8
14	K204-0181	Dual Bunk Bracket, rev.(part of #7)	8



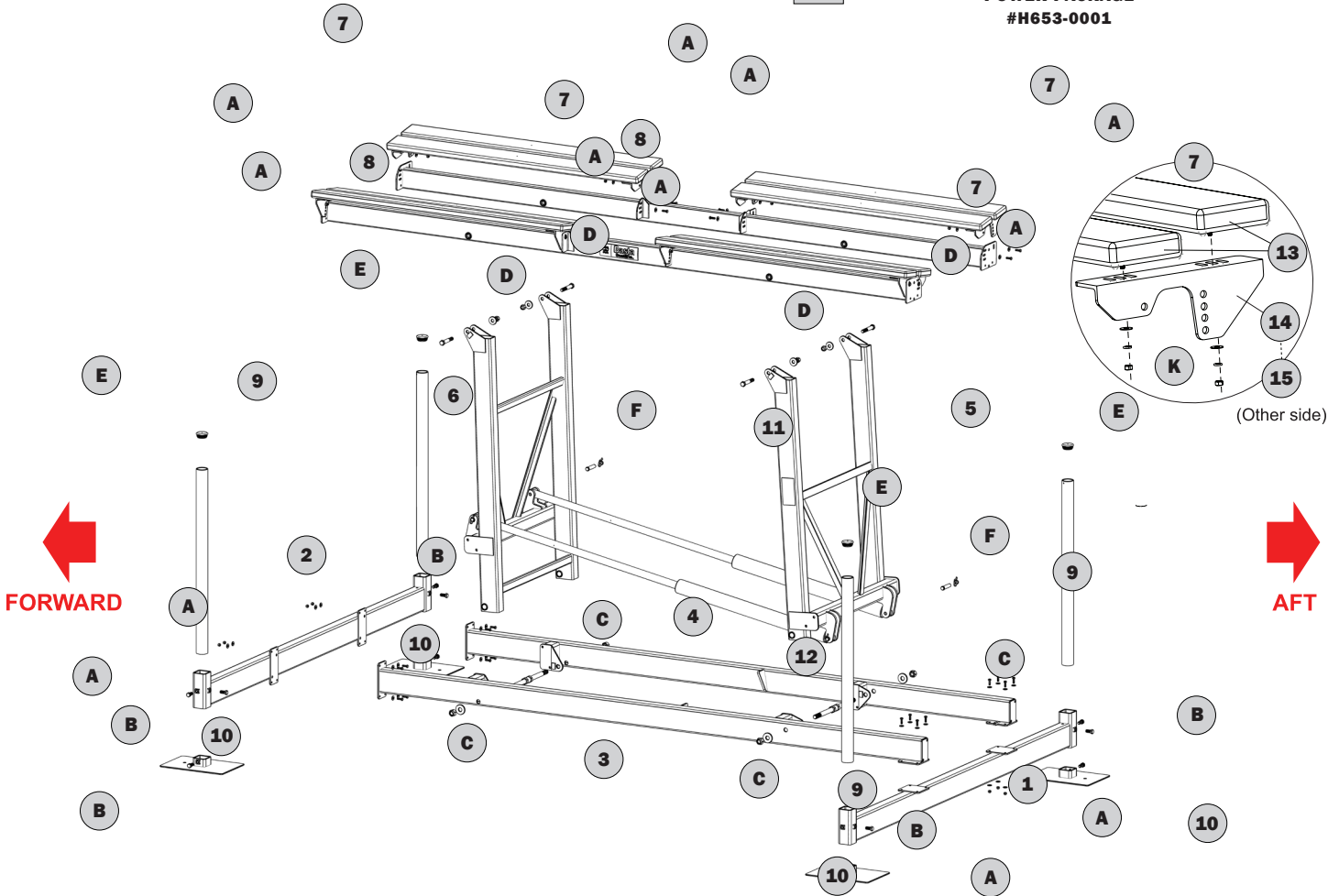
ITEM	PART NO.	DESCRIPTION	QTY.
A	S362-0008	Nylon Insert Lock Nut 3/8 SS	32
A	S313-0008	Washer Flat 3/8 SS	64
A	S103-0506	Hex Set Screw 3/8 x 1-1/4 SS	32
B	S166-6812	Hex Set Screw 5/8 x 1-1/2 SS	12
C	S313-0015	Washer Flat 1, SS	4
C	S362-0014	Nylon Insert Lock Nut 1 x 8	4
C	S103-1020	Bolt Hex Head 1 x 900	4
D	S103-0911	Hex Cap Screw 3/4 x 4-1/2 SS	4
D	S362-0012	Nylon Insert Lock Nut 3/4 SS	4
D	S313-0013	Washer Flat 3/4 SS	4

ITEM	PART NO.	DESCRIPTION	QTY.
E	F730-0013	Plastic Cap 2-1/2 Round	4
F	S503-0013	Clevis Pin 3/4 x 3-1/2 SS	4
F	S522-0801	Ring Type Cotter Pin SS	4
G	Y356-0003	Anti-seize Grease Packet	2
H	M620-1003	H-frame Bushing (service part)	4
J	M620-1002	Bunk Rail Bushing (service part)	4
K	S321-0007	Washer Lock 5/16, Galvanized	16
K	S312-0007	Washer Flat 5/16, Galvanized	16
K	S341-0007	Nut 5/16, Galvanized	16

ITEM	PART NO.	DESCRIPTION	QTY.
A1	R812-0012	Remote Control Master Unit	1
B1	R283-0002	Solar Controller	1
C1	R310-0001	On/Off Switch	1
D1	R310-0002	Up/Down Switch	2
E1	R281-0004	Solar Panel Assembly	1
F1	C243-0003	Power Box Unit, STD	1



**POWER PACKAGE  
#H653-0001**



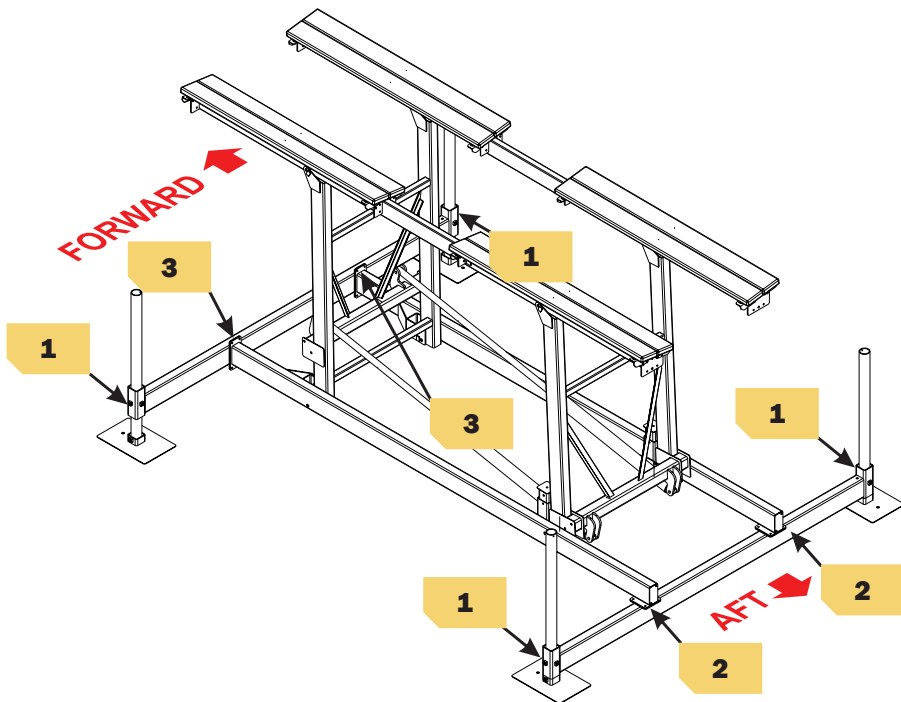
**Symbol Glossary for the following pages:**

- 1** indicates an illustration for a procedure.
- AA/A** indicates a major/minor part described in the parts list on pages 4.
- a** or **c+d** indicate hardware items shown above and described in the parts list on pages 4 and 5.

**Tools needed for the job:**

- Tape measure
- Level
- 1-1/8 box-end wrench
- 9/16 box-end wrench
- Channel lock pliers
- Medium sized adjustable wrench
- 9/16 socket
- 1-1/8 socket
- 3/4 socket
- socket wrench

## Pictured: Steps 1-3



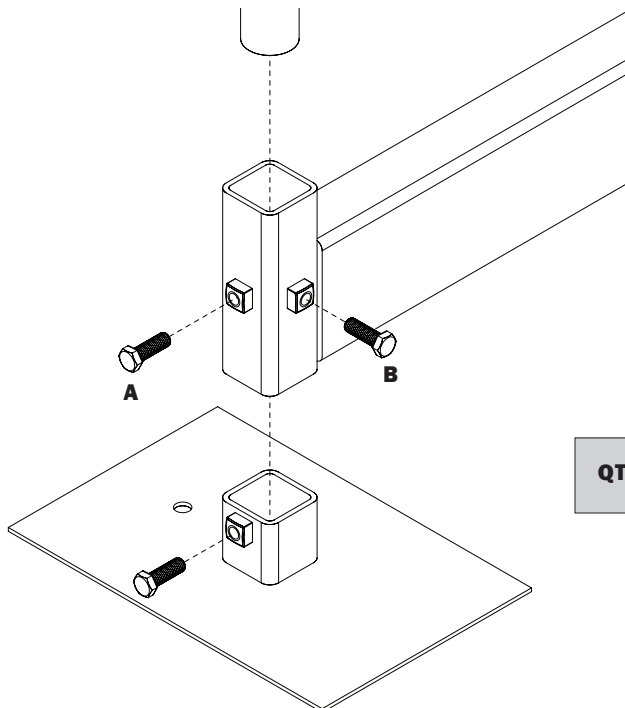
Use a small amount of 'moly' lube on bolt threads through the assembly process.

Do not tighten any hardware until step 8.

Assemble lift on level ground and adjust legs so that lift base frame is level during lift assembly.

## 1

### Foot & Leg Sockets

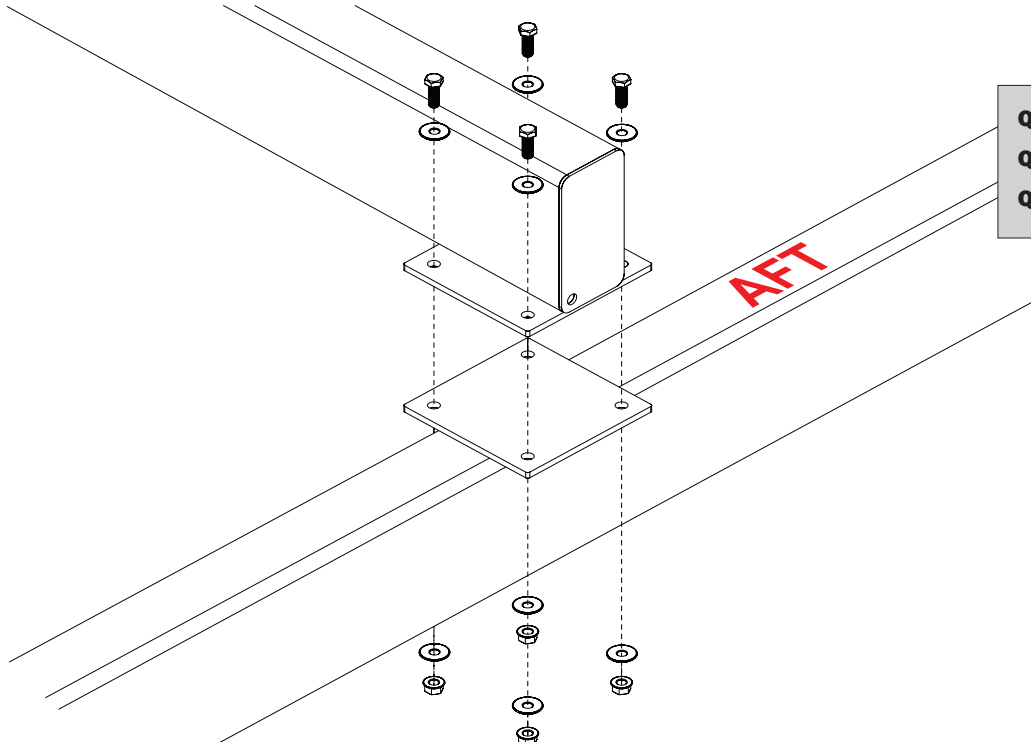


Tighten set screws A & B alternately to push leg securely into corner of leg socket.

**QTY 12: 5/8 x 1-1/2 hex head set screws**

**2**

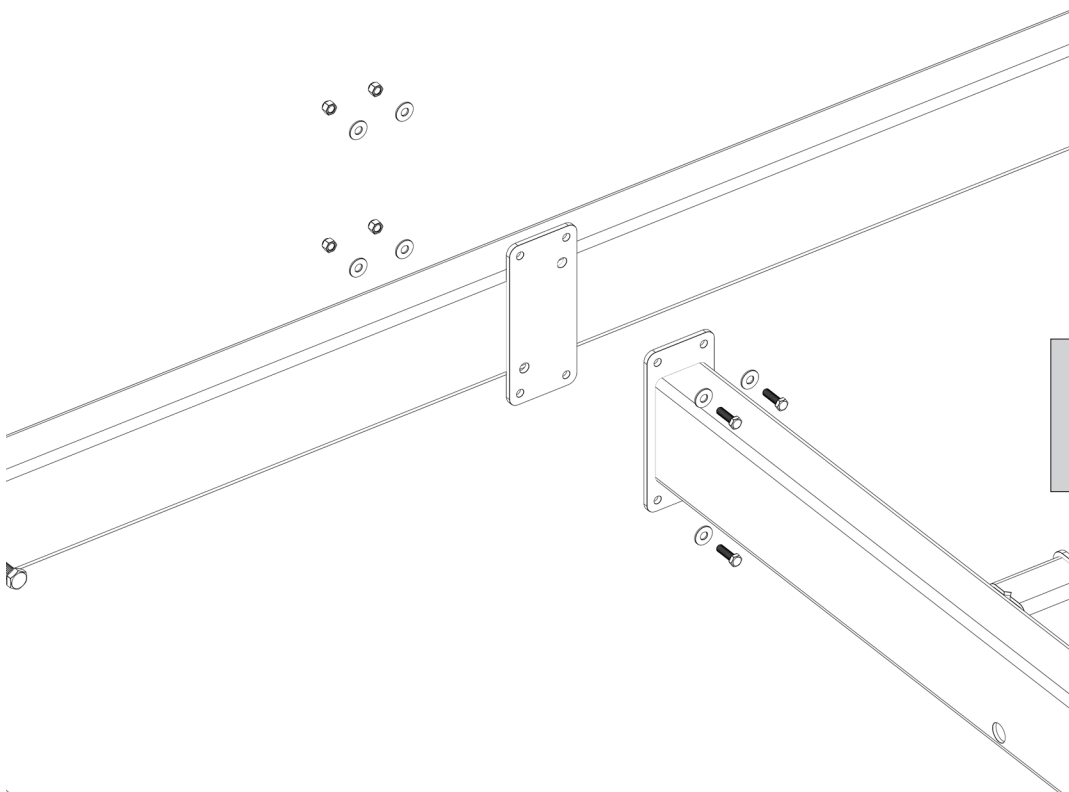
**Aft Crossmember**



QTY 8: 3/8 x 1-1/4 bolts  
QTY 16: 3/8 flat washers  
QTY 8: 3/8 lock nuts

**3**

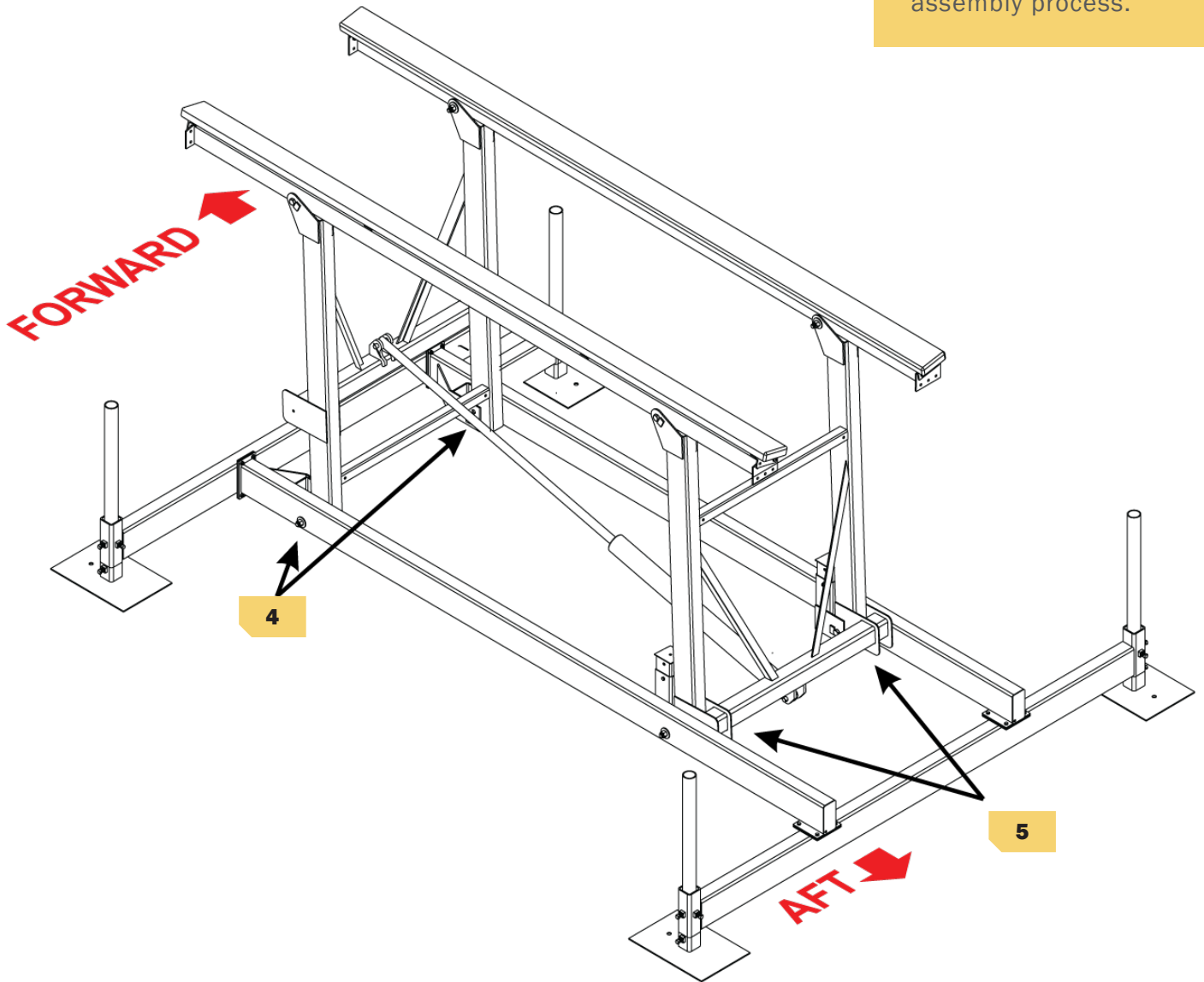
**Forward Crossmember**



QTY 8: 3/8 x 1-1/4 bolts  
QTY 16: 3/8 flat washers  
QTY 8: 3/8 lock nuts

## Pictured: Steps 4-5

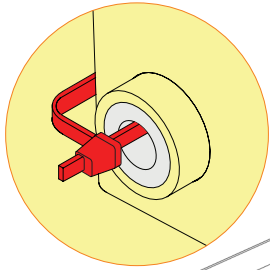
Use a small amount of 'moly' lube on bolt threads through the assembly process.



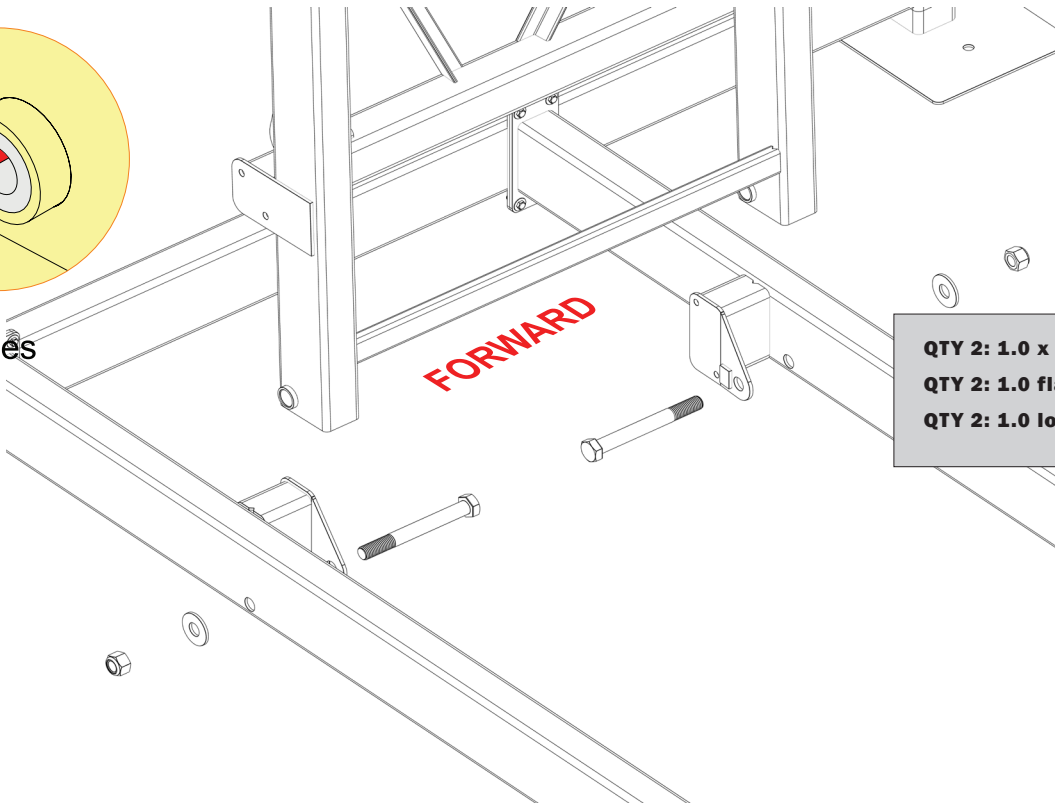


# 4

## Forward H-Frame



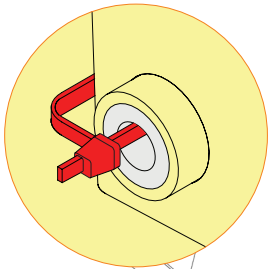
NOTE:  
remove ties



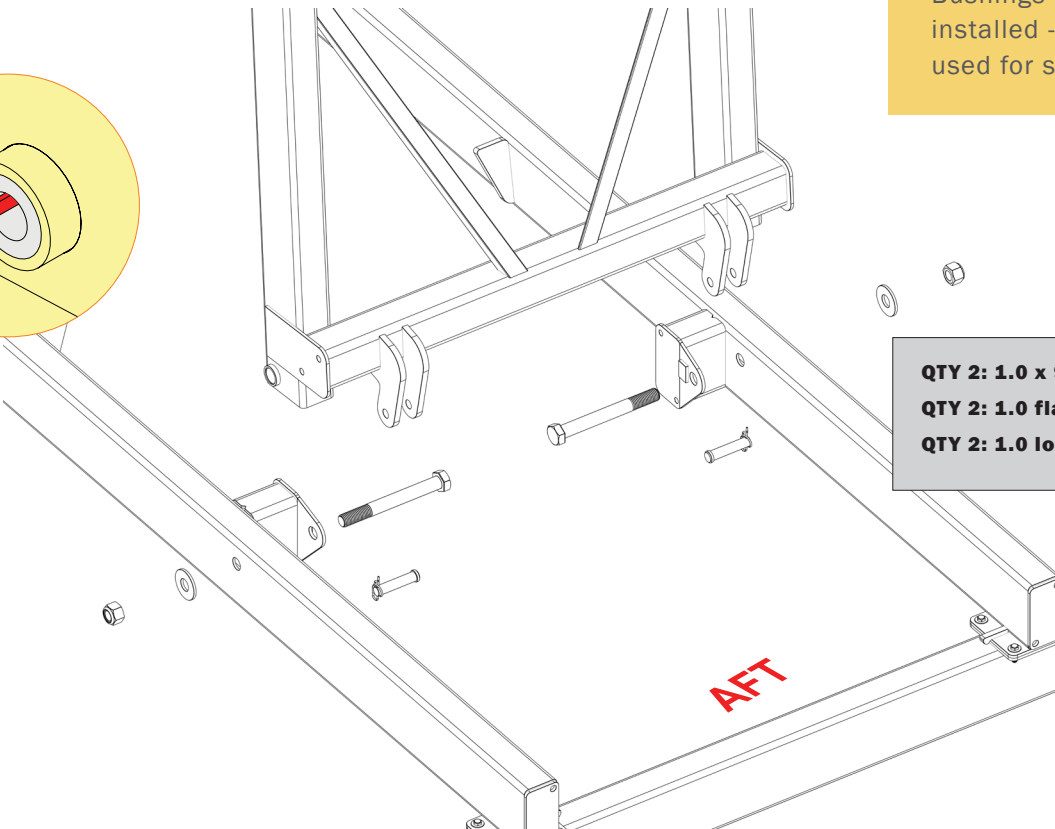
- QTY 2: 1.0 x 9.0 bolts
- QTY 2: 1.0 flat washers
- QTY 2: 1.0 lock nuts

# 5

## Aft H-Frame

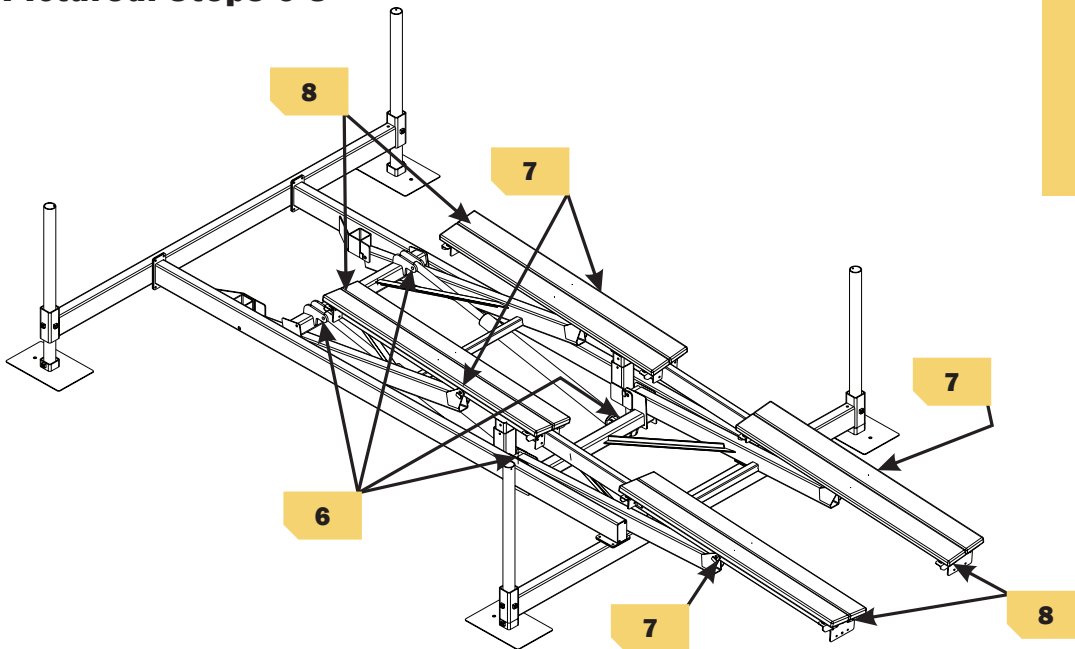


Bushings are pre-installed - remove cable ties used for shipping.



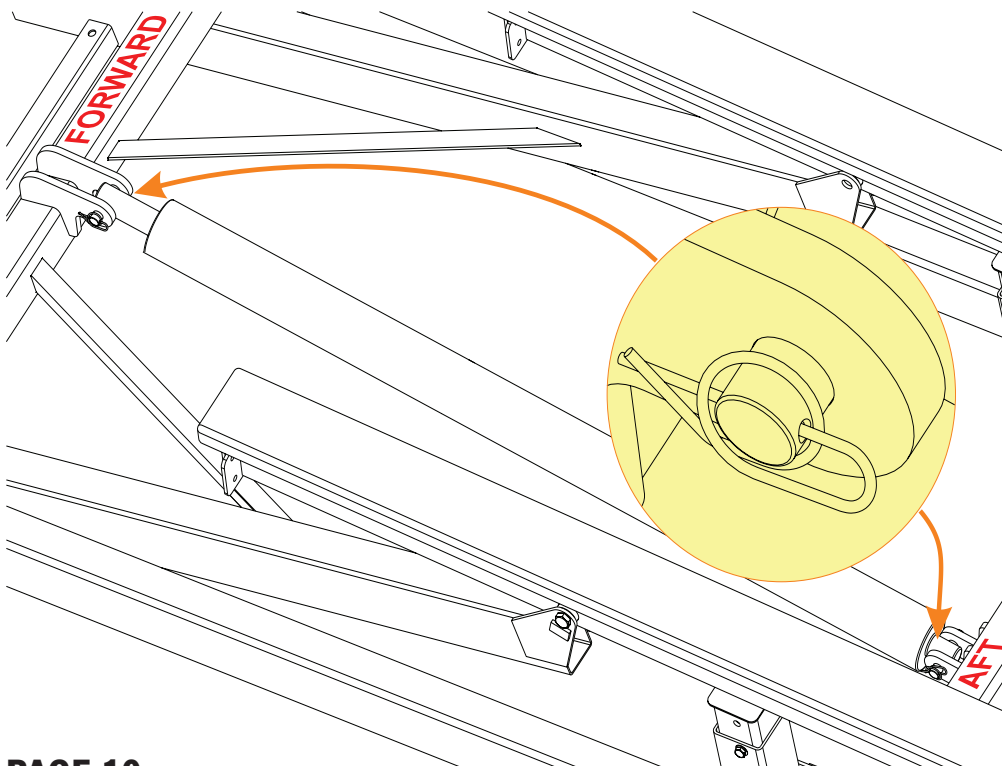
- QTY 2: 1.0 x 9.0 bolts
- QTY 2: 1.0 flat washers
- QTY 2: 1.0 lock nuts

## Pictured: Steps 6-8



Use a small amount of 'moly' lube on bolt threads through the assembly process.

## 6 Cylinders



QTY 4: 3/4x 3-1/2 clevis pins  
QTY 4: ring type cotter pins

### IMPORTANT

Install cylinder with hose fittings facing down!

Install cylinders with lift in 'down' position.

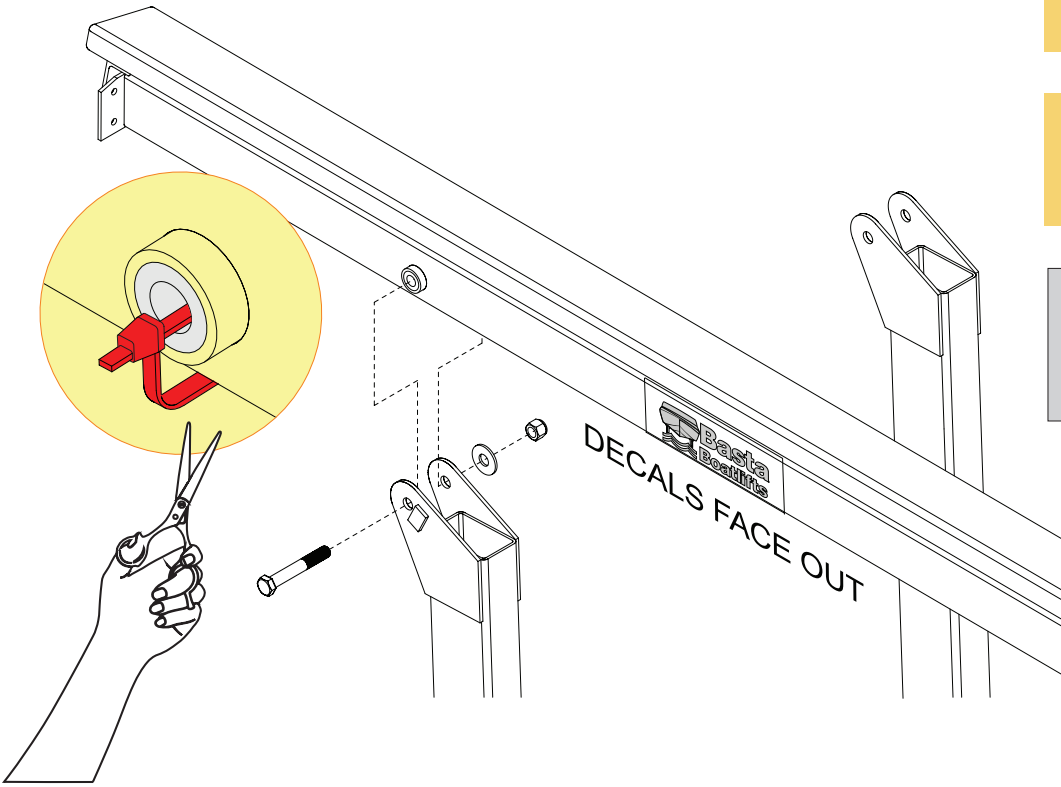
# 7

## Bunk Rails

After the bunks are installed, adjust the frame to be square and level, then tighten bolts.

Install bunks with lift in 'down' position.

- QTY 4: 3/4 x 4-1/2 bolts
- QTY 4: 3/4 flat washers
- QTY 4: 3/4 lock nuts



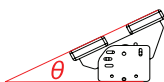
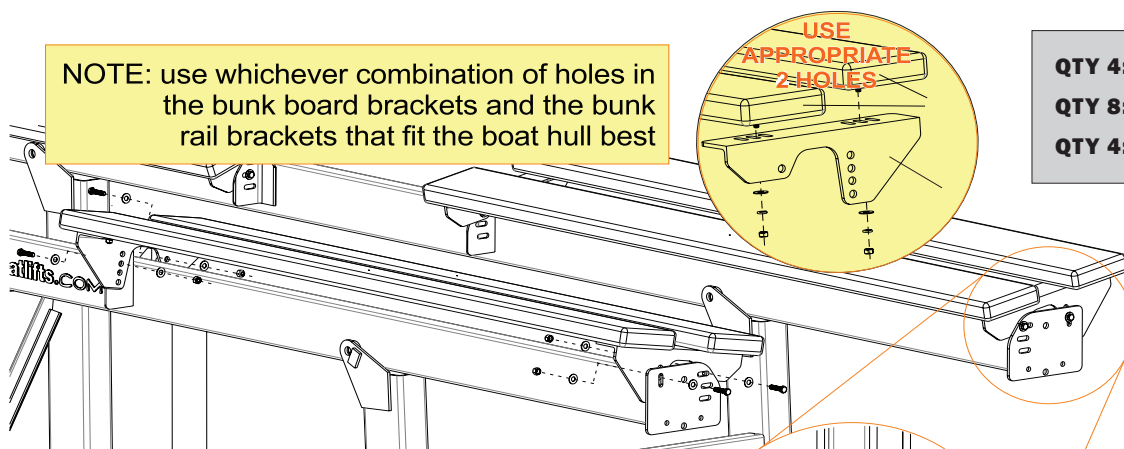
# 8

## Bunk Boards

Install bolts toward center of lift, opposite the decals.

NOTE: use whichever combination of holes in the bunk board brackets and the bunk rail brackets that fit the boat hull best

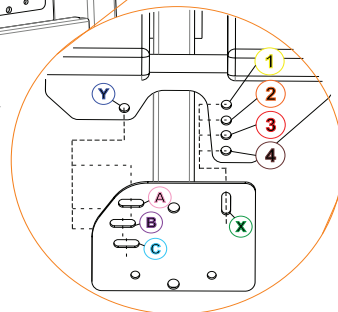
- QTY 4: 3/8 x 1-1/4 bolts
- QTY 8: 3/8 flat washers
- QTY 4: 3/8 lock nuts



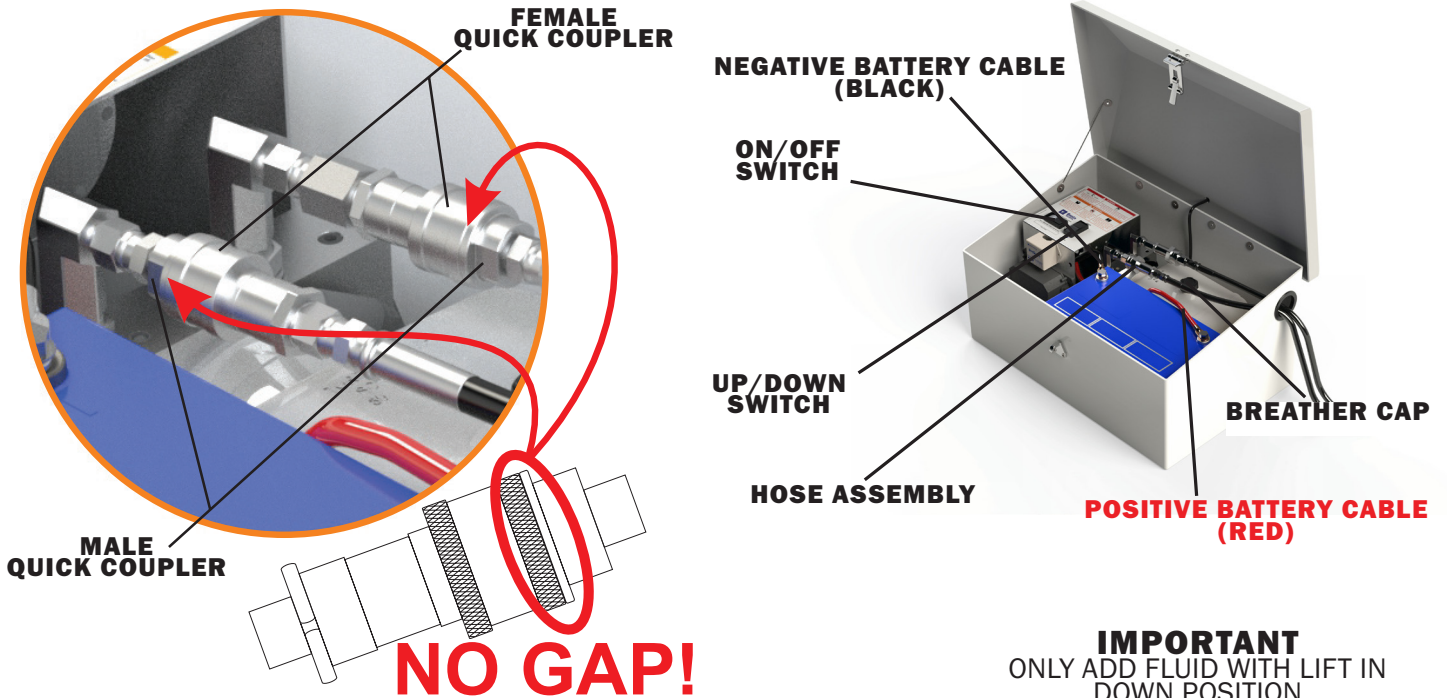
### Angle Adjustment

Choose hole 1-4 to bolt to slot X  
Choose slot A-C to bolt to hole Y

	1	2	3	4
A	A1: 0° Flat	A2: 5° - 10°	N/A	N/A
B	B1: 10° - 15°	B2: 20° - 25°	B3: 25° - 30°	B4: 35° - 40°
C	C1: 20° - 25°	C2: 30° - 35°	C3: 35° - 45°	B4: 45° - 55°



## 9 Complete Power Unit Package



**Step 1:** Slide the Hydraulic Hose Assembly through the access hole in the side of the fiberglass enclosure and attach the ends to their corresponding Quick Couplers. Ensure each Quick Coupler is fully seated, tight and with no gap at the connection joint.

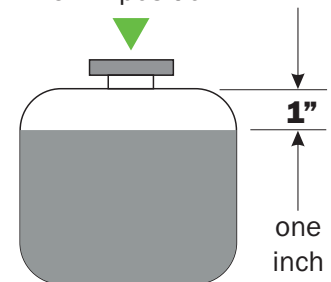
**Step 2:** Ensure reservoir breather cap installed before first use.

**Step 3:** Install Battery as shown. Connect the Red Battery Cable to the positive terminal (+) and the Black Battery Cable to the negative terminal (-).

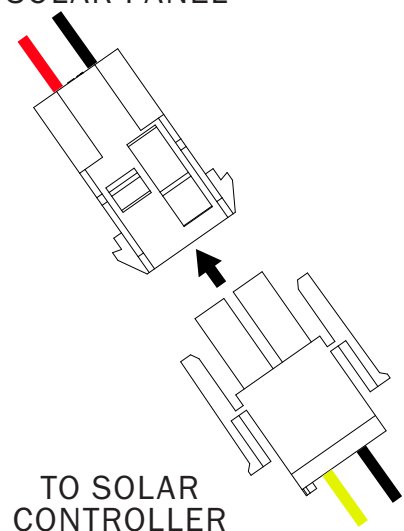
**Step 4:** Connect yellow/black wire plug from solar controller to solar panel plug.

**Step 5:** Before moving into the water, test the lift on dry ground using the Up/Down Switch and the Key Fob Transmitters. Inspect the system for leaks.

**IMPORTANT**  
ONLY ADD FLUID WITH LIFT IN DOWN POSITION  
Hydraulic fluid shown with lift in the DOWN position



TO SOLAR PANEL



# Placement & Leveling Instructions



**10**

Test lift on dry ground for leaks, remote control function and correct operation before moving into water. Tighten all hardware.

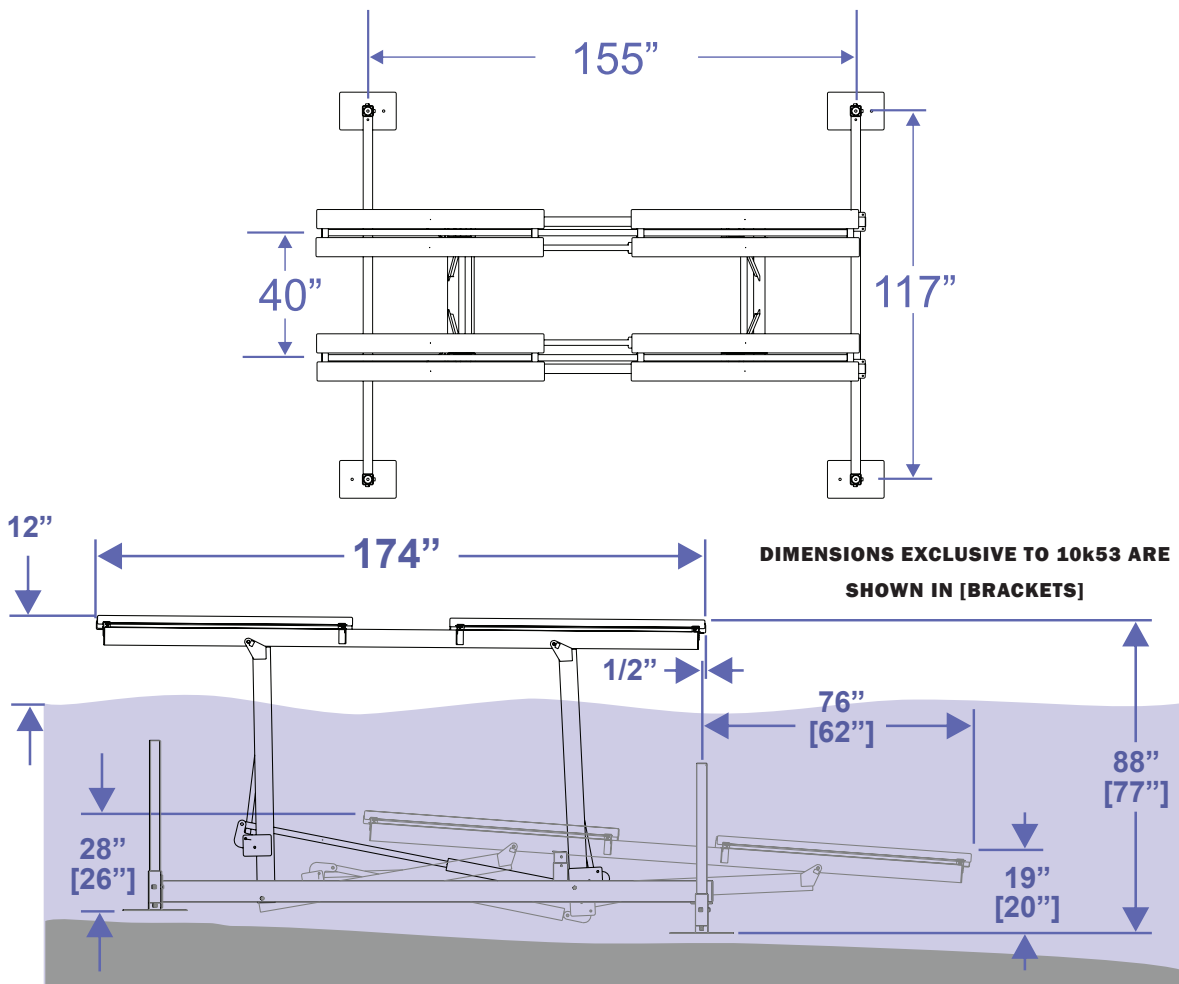
**11**

Lower the lift completely, then raise it 1 inch. Disconnect the Hydraulic Hose Quick Couplers in the Power Unit box to separate it from the lift.

**12**

Move the lift to final destination. Use this diagram to help place the lift. Lift placement should be so that the top of the aft end of the bunks are one foot above the highwater mark when the lift is in the full up position, and one foot below the low water mark, when the lift is in the down position.

## USE THIS DIAGRAM TO HELP PLACE THE LIFT

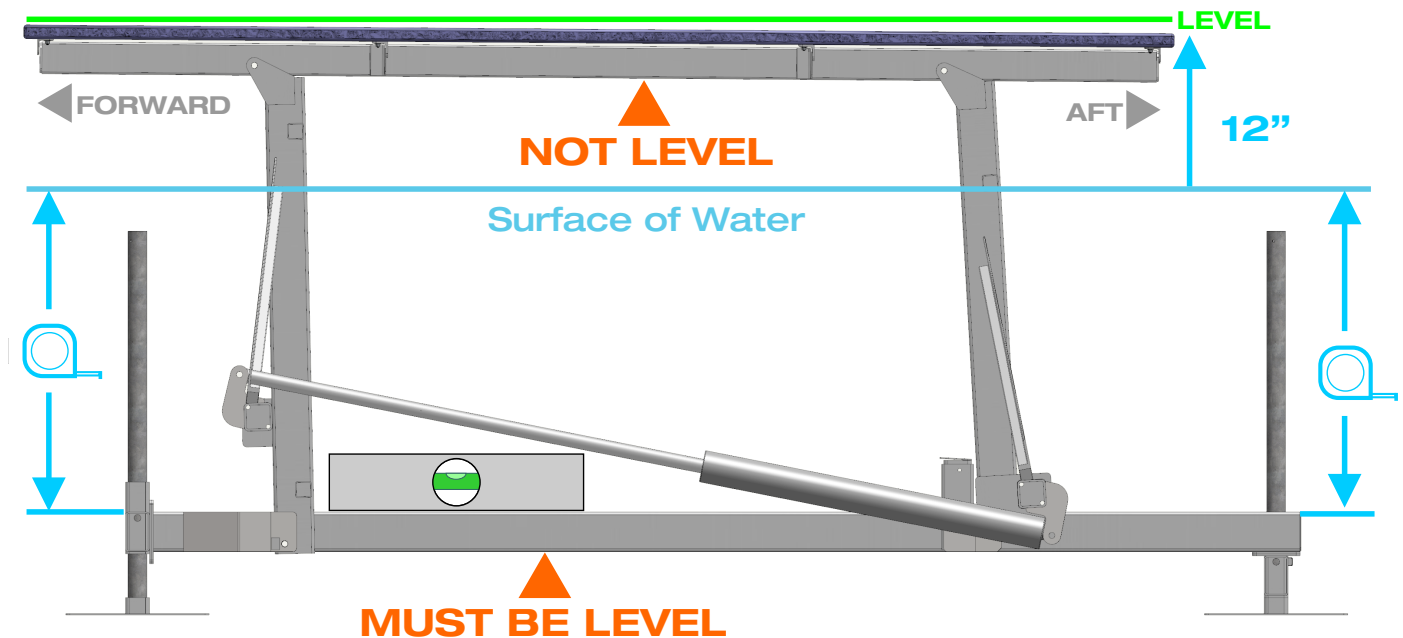


**IMPORTANT:** The leveling process must be completed to ensure stability of the lift frame and Over-Center safety lock.

**13**

Level the lift following these instructions while referencing image below:

- Step 1:** Use a tape measure (reference image on right) to determine that the lower frame is level.
- Step 2:** If the lower frame needs to be raised start with the lowest corner first then work your way around the lift in a circle, corner to corner. Adjust the lift legs as needed.
- Step 3:** To make adjustments, first make sure the lift is properly supported. Then, loosen the anti-sway bolts, remove the P-pin and raise or lower the lift crossmember on the leg. Level the lift one corner at a time, while making sure not to have more than 5" of difference in height between the corners to prevent binding.



**Leveling requires a second person to support the crossmember while making adjustments. If the lift is too heavy for two people, a ratchet strap or winch system will be required to raise/lower the frame corners.**

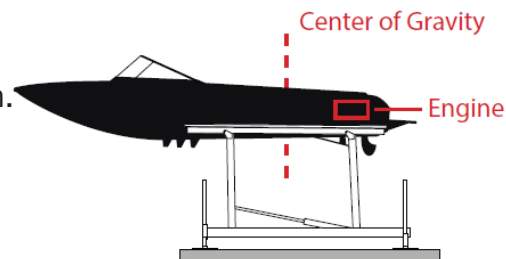
**Contact dealer or Basta at 866-GO-BASTA for additional assistance.**

**14**

Re-connect the Hydraulic Hose Quick Couplers inside the Power Unit box. Fully raise lift and finish adjusting the legs so that the base frame is level side-to-side and forward-to-aft. After the lift is assembled and installed, all fasteners should be checked for proper tightness and reinspected periodically.

**15**

Power on. Using the manual switch on the control panel, switch the On/Off switch to the “On” position. Wait 5 seconds before moving to step 16.

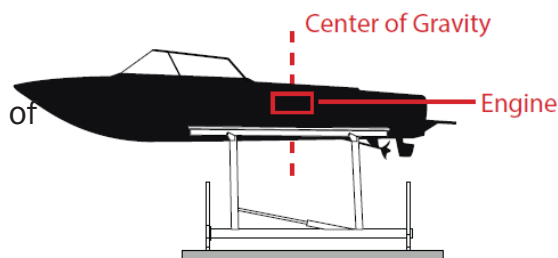


V-Drive

**16**

Load the boat onto the lift using the following operational instructions:

1. Align the boat so it is centered between the bunks side-to-side.
2. Move the boat forward to position its center of gravity near the bunks' centers.

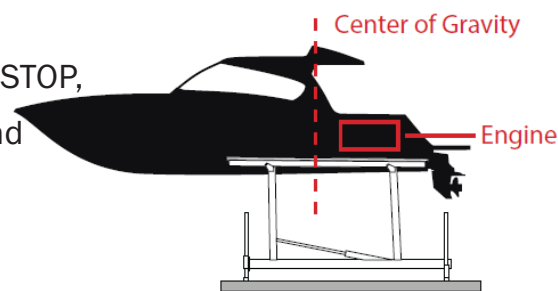


Direct Drive

**17**

Perform the following adjustments to finalize the lift installation:

1. Disembark and raise the boat.  
If more than two inches of settling occurs, STOP, carefully lower the lift to remove the boat and re-level the lift. Continue repeating this step until the lift can be raised into the full Over-Center™ position without settling.
2. Remove the boat. Verify that the lift frame is level. Re-level the framework if necessary.
3. Check all bolts for proper tightness.



I/O &amp; Outboard

*Shown: examples of fore and aft placement of the boat on the boat lift, which varies based on engine location.*

## OPTIONAL

The lift legs can be cut off above the leg sockets after installation for a cleaner look. First, make sure that the lift has fully settled and has been re-leveled. Install leg caps (95).

NOTE: If you plan to add a canopy or relocate the lift into deeper water, you must keep the existing leg length or purchase new legs in the future.

## IMPORTANT:

- If you purchase a new vessel, make sure it does not exceed the weight capacity limits of the lift. Maximum weight capacity can be found on the cover of this manual and on the H frame of the lift.
- Always turn power unit OFF when not in use.
- Keep inside of power unit box dry.
- To prevent unauthorized use lock box using padlock through the latch hasp.
- Securing your mooring line to the dock may provide additional security should the lift be lowered inadvertently.
- Leaving your bilge pump on the automatic setting may prevent the accumulation of rainwater in your vessel and overloading of the lift.
- Service your lift according to recommended Maintenance (page 21).
- Only use Basta Boatlifts approved fluid in lift. Contact Basta Boatlifts or authorized dealer for approved biodegradable hydraulic fluid.
- When not in use, store the lift in the upright position to prevent it from being an unknown hazard underwater.
- Store with the power off.

## Loading/Unloading:

**Step 1:** Power on. Using the manual switch on the control panel, switch the On/Off switch to the “On” position. Wait 5 seconds.

**Step 2:** Lower the Lift. Using the Key Fob, unlock the Fob by pressing and holding the lock button for 3 seconds before releasing. Next, press the “DN” button to lower the lift.

**Step 3:** Carefully guide the watercraft onto the lift.

To load, repeat above in reverse order upon return to lift.

For more questions or troubleshooting, consult your Authorized Dealer, the FAQs page on [Bastaboatlifts.com](http://Bastaboatlifts.com), or give us a call at 425-641-8911.



## FOB POWER-UP

After turning on the ON/OFF switch in the dock box, the fob receiver requires a 5 second delay before the fob is enabled.

## FOB OPERATION

Depress the unlock button (lower right) for 3 seconds, this will allow normal operation of the fob. The lockout is re-enabled after 60 seconds without a button press. Lift operation using the fob is limited to 120 seconds of continuous operation. If a longer cycle is needed it is necessary to release button and then re-depress.



## ADDING NEW KEY FOB

1. Turn off the ON/OFF switch.
2. Wait 20 seconds.
3. Turn power back on, and within 5 seconds of power on, press both the UP and DOWN buttons on the fob simultaneously for 1 second then release.
4. Repeat steps 1-3 for additional Fobs. Up to four fobs may be enrolled. If a fifth fob is enrolled, the first enrolled fob will fall off the list.

## TROUBLESHOOTING

**Check Lift Battery** - If fob worked previously, but does not currently, this may be because the lift battery voltage has hit the fob LOW BATTERY LOCKOUT. The remote control contains a low voltage lockout which is intended to protect the lift's battery from over-discharge. When the lift battery voltage drops below 9.5 volts, during operation, the fob will no longer function. The manual UP/ DOWN switches will allow the lift to operate, however this should only be done to secure the boat. To avoid permanent damage to the lift battery, it should be fully charged prior to further use. If lift battery will not hold a charge, replace lift battery.

**Check Fob Battery** - If the lift battery is properly charged, replace fob battery, or verify fob battery has greater than 3v.

## BATTERY REPLACEMENT

Fob uses CR2032, 3 volt battery, commonly found online or at drug / hardware stores. Part numbers vary by manufacturer.

## UNDERWATER LIGHTS

The underwater lights are activated whenever the lift is operated. The lights stay on for 2 minutes after the lift is operated. The lights may be manually turned on or off by depressing the lower left button on the remote fob. When manually enabled the lights will automatically turn off after 4 minutes. This is designed to prevent accidental battery discharge.

For more questions or troubleshooting, consult your Authorized Dealer, the FAQs page on [Bastaboatlifts.com](http://Bastaboatlifts.com), or give us a call at 425-641-8911.

## **Q: THE BATTERY WILL NOT HOLD A CHARGE**

- A: Ensure the solar panel is properly connected.
- A: Re-align the solar panel for proper exposure to the sun.
- A: Recharge the battery with an AGM battery trickle charger and check the charge again.
- A: Have the battery tested. It may be old and require replacement.
- A: If the lift is being used frequently during the day, it may be necessary to use a 110-volt maintainer/charger.

**NOTE: IF A BATTERY CHARGER WILL BE USED FOR AN EXTENDED PERIOD OF TIME, OR PERMANENTLY, DISCONNECT THE SOLAR PANEL FROM THE SOLAR CONTROLLER**

## **Q: THE REMOTE CONTROL IS NOT FUNCTIONING**

- A: The battery in the key fob transmitter may be low. Replace it with a new lithium CR2032. These are widely available at variety, hardware and even grocery stores. Polarity is marked on the battery holder.
- A: Verify that the lift battery is charged and connections are tight.
- A: Reprogram the remote key fobs.

## **Q: THE PUMP DOESN'T RUN**

- A: Check the battery charge and recharge if necessary.
- A: Check the battery connections, clean and re-secure if necessary.

## **Q: THE PUMP RUNS, BUT THE LIFT DOESN'T MOVE**

- A: Check the 'Quick Couplers' in the Power Unit. If they are not screwed together tight enough, built-in check valves will not allow fluid to flow. See Page 12.
- A: Check the fluid level. See Page 19.

## **Q: DOES THE LIFT HAVE TO GO ALL THE WAY UP?**

- A: YES - For safety and in order for your lift to function as intended the lift must ALWAYS be stored in the full upright and locked over-center position when the watercraft is unattended.

## **Q: IS MY VESSEL SECURE?**

- A: Yes, once you verify that the lift is Over-Center™, switch off the power and lock the power unit box, there is less chance of theft.

## **Q: DO I NEED A MOORING LINE?**

- A: Under most circumstances one mooring line is sufficient to prevent the watercraft from drifting away if the lift is inadvertently lowered or the water level rises.

## **Q: HOW MUCH SUN DOES THE SOLAR PANEL NEED?**

- A: This depends on how frequently the boat lift is used and how directly the panel receives sun. Ideally the panel should receive constant sun for at least 6-8 hours a day.

That in mind, each customer's use and available sunlight (or partial sunlight) will be different. If the solar panel is not keeping the lift battery properly charged for your desired use, please contact Basta Boatlifts or your Authorized Dealer for solutions for your scenario.

## **Q: HOW DO I KNOW WHEN IT IS TIME TO CHANGE THE FLUID?**

- A: Basta Boatlifts' hydraulic fluid lasts between 3-6 years depending on usage. If you begin to hear an increased pitch in the sound of your pump motor, it is likely time to flush your hydraulic fluid. You can also tell by the clarity of the fluid. Fluid that is ready to be changed will be dark in color or cloudy. New fluid is clear.

## **Q: HOW DO I CHANGE THE HYDRAULIC FLUID?**

- A: Visit our website [www.gobasta.com/support](http://www.gobasta.com/support) for detailed instructions.

## **Q: WHAT IF I GET A NEW VESSEL?**

- A: Verify that the new vessel does not exceed the capacity of the lift.
- A: Re-leveling the lift may be necessary.
- A: A new lift will be required if the watercraft exceeds the weight capacity of your current lift.

**For more answers to frequently asked questions, visit:  
<https://bastaboatlifts.com/basta-faqs/>**

**FOR ASSISTANCE OR SERVICE:  
Contact your local dealer or call  
1-866-Go-Basta  
or email: [service@gobasta.com](mailto:service@gobasta.com)**

## BATTERY

Always use AGM batteries and follow battery manufacturer's warnings and instructions. Improper use, or use of other batteries, have the potential to produce flammable hydrogen gas which can result in serious injury or death. If you have limited solar exposure when the lift is not in use (typically winter), consider moving battery to a temperate environment (garage) and leave on battery maintainer. **Always disconnect solar panel plug prior to when battery is disconnected from solar controller.**

## SOLAR PANEL

Monthly (more frequently in necessary) Wipe the solar panel with a clean, damp cloth to maintain its charging performance.

## EVERY 6 MONTHS:

- Inspect hoses, cylinders and fittings for leaks and wear
- Check wire terminals for snugness and corrosion
- Check hydraulic fluid level and clarity as shown in **FIG 1**. The hydraulic fluid level should be about one inch below the top of the reservoir with the lift completely down. **DO NOT add fluid with the lift in the raised position!** Use only Basta Boatlifts approved fluid. The lift power system does not consume fluid, so if the fluid is low, a leak was/is present.

## EVERY 3-5 YEARS:

Flush hydraulic fluid. Visit the Basta Boatlifts service page for detailed instructions on how to perform a fluid flush. <https://bastaboatlifts.com/support/>.

Annual factory approved service is available. Contact your local dealer or Basta Boatlifts for additional information.

**NOTE:** If an anode package is installed, check and replace as needed. Anodes must be replaced before they are completely consumed otherwise significant damage may result.

**IMPORTANT  
ONLY ADD FLUID WITH LIFT  
IN DOWN POSITION**

**Hydraulic fluid shown with  
lift in the DOWN position**

